

INFLU

INFLU



innerSPACE

Infinity Workstation

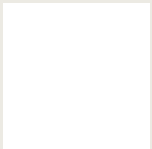
Referencing the continuous loop design of its leg profile, the Infinity workstation's triangular leg allows for different configurations to suit an infinite amount of space and various layout.

Available with optional cable management options including a central cable tray, basket and soft wiring umbilicals.

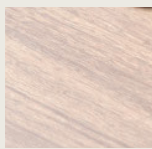
Desktop accessories including monitor arms, desktop power and shelvings are also available.



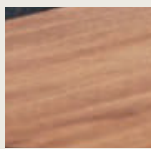
WORKTOPS



Melamine

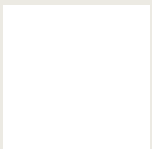


Melamine

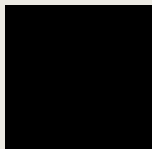


Veneer

FRAME



White



Black

SPECIFICATIONS

WORKTOP DIMENSIONS: 1500, 1800mm Long x 600, 800mm Deep. Others available on request

WARRANTY: 10 years

FINISHES

Worktops are available in a range of sizes and finishes from Laminex and Polytec.

Legs come in white and black powder coat as standard. Other colours available upon request.

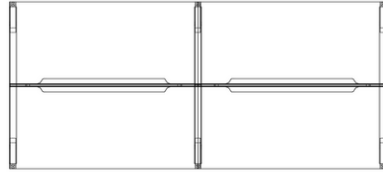


CONFIGURATIONS

WORKTOP SIZES



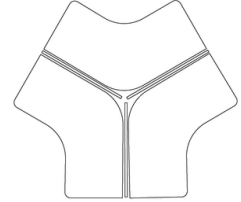
Single



Back to Back Cluster -
2, 4, 6 or 8 person



L Shaped



120 Degree

Screens Types



Framed with accessory rail
Fabric or Echopanel



Frameless Recycled PET
Custom colours



Perspex
Clear, frosted or coloured

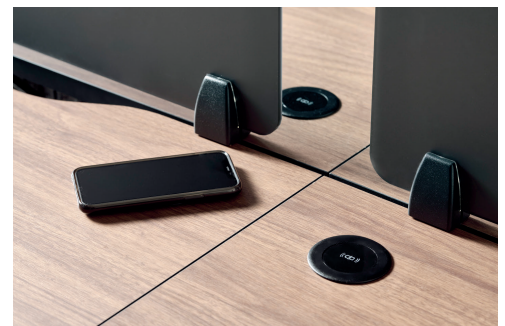
Optional Accessories



Screen hung Bookshelves, Name
Plates, Paper trays, Task Lighting
and Divider screens.



Above or below desk
Power/Data
Monitor Arms, Laptop holders,
CPU
holders and Soft Wiring.



In desk chargers