

# The Freedom<sup>®</sup> Chair

Designed by Niels Diffrient. Made by Humanscale.

**Iconic aesthetic** differentiates it from other task chairs

**Dynamic headrest** cradles the head and neck as the user reclines (Freedom Headrest only)

**Durable and automatic pivoting backrest** provides perfect lumbar support in recline positions

**Synchronous armrests** allow effortless adjustment with one hand and the unique arm design attaches to the backrest to move with the user during all positions of recline

**Contoured cushions** offer long-term comfort, reduce pressure points and provide exceptional weight distribution

**Innovative weight-sensitive, self-locking recline mechanism** cleverly adjusts the tension and recline of the chair for full support throughout movement

**Robust 15-year warranty and modular design** ensure long serviceable life of chair

## Available Options

- Synchronous or advanced arms in duron or gel with matching textiles
- Range of cylinders including low, return to height or tall with foot ring
- Coat hanger attachment
- Soft casters, glides or locking casters for use on a range of floor surfaces
- Frame and base finish options: Graphite, Titanium and Polished Aluminum with Graphite or Titanium trim

# Humanscale<sup>®</sup>



# Complementary Textiles

Available in a wide variety of colors, our high-performance textiles are specifically created to maximize the unique, ergonomic performance of the Freedom chair.

## Luxury Leathers

Our range of leathers come with box stitching (matching or contrasting) for increased comfort and durability.



**Vicenza's** enriched leather and smooth grain complement the chair's sleek profile.



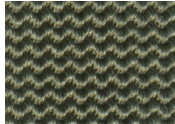
A rich, durable leather, **Bizon** is expertly sealed and finished with excellent lightfastness.



**Cervo** is a heavy-weight leather, with a soft pebble grain for unmatched comfort.

## Four-Way Stretch Fabrics

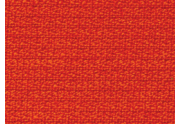
These breathable textiles are specifically created to enhance the comfort and performance of Humanscale's seating.



**Wave** is made with a distinctively flexible and form-fitting weave.



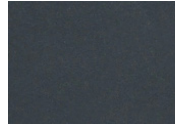
A durable and responsive fabric, **Vellum** supports the sitter's shifting movements.



A flexible wool textile, **Ginkgo** is available in vibrant and long-lasting colors.

## Easy Clean Materials

These antimicrobial fabrics are easy to clean and ideal for healthcare and high-traffic environments.



The soft texture of **Lotus** features water repellant properties for exceptional durability.



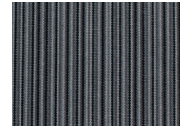
An environmentally friendly textile, the long-lasting, resilient **Promessa** has a pebble texture.

## Robust Fabrics

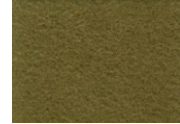
These innovative fabrics feature patterns and textures that enhance any environment.



**Squiggle** features an innovative weave structure that can be applied vertically or horizontally.



With earthy tones and a linear design, **Bridget Stripe** adds texture and depth to any space.



**Sensuede** has a silky texture and an extra strong composition for the ultimate in resilience.