

upholstery and upholstery decorations

Upholstery materials are divided into price categories. Fabrics and artificial leathers fall under categories A to E and natural leather falls under categories 1 and 2. Natural materials make up more than 50% of many fabrics. All upholstery materials, especially those with high wear resist-

ance, are suitable for use in public areas. Many of them also fulfil the safety requirements for flame retardancy. In compliance with environmental protection, the materials fulfil the requirements of EU regulations or other internationally recognised organisations.

Click on this [link](#) for detailed photographs.

Fabrics and artificial leathers

■ Cotton mixture

Cotton is one of the most important and oldest natural raw materials used to make textiles. Cotton yarn is flexible, soft and pleasant to the touch. Cotton has a high tensile strength and abrasion resistance. In combination with flax yarn, the fabric strength is further increased. Flax yarn is characterised by its single-direction fibre, which gives the fabrics a natural appearance. The admixture of viscose, which is used as a substitute for silk, gives the fabric a higher gloss and more flowing character. The artificial fibres (polyester, acrylic) which are elastic and ductile, increase the flexibility, pliability and shape stability of the mixed fabrics.

■ Wool

Wool is a natural fibre of the highest quality. The dyed wool fibres are highly colour-fast. Thanks to the water and protein content, the wool is naturally fire resistant and its ignition point is 700 °C, for which reason it fulfils the high requirements of flammability tests. The wool also has antibacterial properties. The rugged surface of the fibres in combination with their extraordinary ability to absorb moisture prevents growth of bacteria which prefer the smooth walls of artificial fibres. Woollen textiles are good absorbers of noise and increase the sense of peace and quiet around us. Production of wool is based on the principle of renewable energy sources and is environmentally friendly.

■ Polyester

Polyester is a synthetic fibre with versatile application in the textile industry thanks to its properties. Polyester fibres have very good resistance to wear and sunlight, which increases their durability and colour-fastness. The cross-section of the fibres influences the properties of the textiles and may lend them a silky appearance and pleasantness to the touch. The polyester materials have low absorption, which makes them easy to maintain.

■ Trevira CS

Trevira CS textile polyester fibres are developed especially to fulfil the highest requirements par-

ticularly in the field of fire protection. The letters CS incorporated into the name are a synonym for Comfort & Safety. Fire resistance is incorporated into the actual composition of the fibre. The use of the material, natural ageing or washing do not affect the composition of the fibre, and for this reason Trevira CS textiles do not lose their resistance to fire during usage. This differentiates Trevira CS from textiles that have only a surface protection layer on the fibres. This may be disrupted in time and reduce the resistance of the textile. Properties such as colour-fastness and high abrasion resistance also improve comfort of Trevira CS fabrics. The materials are easy to maintain, wash and dry, which also leads to lower energy consumption and environmental friendliness.

Trevira CS Bioactive fabrics fulfil not only the requirements of preventative fire safety, but also enhanced cleanliness. These fibres contain silver, which has antimicrobial effects. As soon as bacteria come into contact with the surface of the textiles, they are damaged by the silver ions, thus preventing their proliferation. It thus eliminates the creation of odours resulting from the decomposition of bacteria. The antimicrobial effect of the fibre is permanent and does not decline with use, washing or the application of disinfectants. This material poses no hazard to health and does not damage the skin.

■ Alcantara

Alcantara is a special textile fabric whose brushed surface has the semblance of velour leather. The essence of the material is fleece made of ultra-thin polyester fibres, which are wrapped with polyurethane. Polyester lends the material strength while polyurethane lends it softness. Alcantara is used for upholstery in the furniture and automotive industry because it is breathable, flexible, crease resistant, wear resistant, plus it is easy to clean, wash and maintain. The unusually dense structure of the material means that it is practically impermeable, so any spilled fluids do not cause stains. They remain on the surface, from where they can be removed easily.

Virgin wool comes directly from shearing of healthy adult sheep or from lambs' first shearing and is processed for the first time (not recycled wool).

As the manufacturer, we reserve the right to differences in the upholstery process if required by the shape of the backrest or seat and the material properties (ductility, pliability). Please note that especially the Split 373 and 374 armchairs are in such case supplied with two vertical lines of stitches on the inner side of the backrest. The Malmö 332 chair has sewn side pieces in the sides of the bent areas if upholstered with Alcantara or natural leather. The Leaf chairs 437 and 439 have horizontal seams in the bent areas of the seat if upholstered with Alcantara and all artificial leathers. The seams can also be applied to the customer's upholstery if the delivered material is not sufficiently ductile.

■ Artificial leather

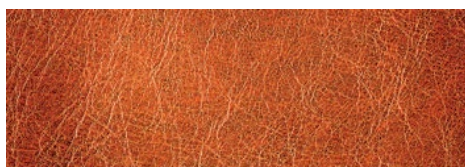
The basis of artificial leather is textile to which PUR, PVC layers or their mixtures are applied. A texture characteristic of natural leather (hide) may be printed onto this layer. Developments in the processing of artificial leather in modern times have resulted in artificial leather not being discernible from natural leather at first glance and thus enabling customers to enjoy the appearance

and comfort of leather at bargain prices. Further advantages of artificial leather include high abrasion resistance, water resistance and easy maintenance. These properties together with the fire retardant finish provide a wide range of applications of artificial leather in public areas, healthcare industry and in households.

Leather

Leather is pliable and warm to the touch, permeable, elastic, has a characteristic scent and is resistant to wear. Its quality depends on the animal's lifestyle but also on how the leather was processed. Minor defects occurring during the animal's life, such as wrinkles, veins, small scars or scratches are regarded as permissible and are even required as an evidence of the genuine

Wrinkles



and unique' quality of the leather. Unacceptable defects are deep scratches, burn marks, thin skin and also defects originating from processing the leather. The long-term natural appearance of leather can be preserved by regular care and by following the few simple principles of use found in our Furniture care & maintenance manual.

Scars



■ Aniline leather

This leather is processed with vegetable oils. Only water-soluble aniline dye is used to dye the leather so the surface of the leather is not treated with a pigment layer. The leather thus retains its open pores and natural permeability, softness and smoothness. Permeability increases user comfort. The temperature of the leather easily adapts to the temperature of the human body, thus eliminating the feeling of cold or unpleasant overheating. Aniline leather best manifests the natural character of leather. The non-uniform colour, natural flaws and individual surface pattern accentuate the originality of each piece.

Elmotique is a thinner aniline leather with a tie-dye effect which shows all the properties of original leather.

■ Semi-aniline leather

Semi-aniline leather is dyed just like aniline leather. But a thin layer of pigment is applied to the surface to protect the leather from damage. For this reason, semi-aniline leather can also be

used in public environments. The pigment layer on the surface only partially reduces the permeability of the pores, it does not cover the natural marks of the leather and maintains the contrasting colours. Elmosoft is a soft and pliable semi-aniline leather which is available in a broad palette of shades. It fulfils applicability in the public sector according to the BS5852 Crib 5 Test.

■ Pigmented leather

Pigmented leather can also be dyed with aniline dyes. The epidermis may be brushed. The surface finish is a layer of pigment dye with an imprint of the uniform raster of the leather surface. This results in loss of natural permeability, reduction in softness and the ability to remove moisture. On the other hand, the pigment layers have very good wear resistance, colour-fastness, better resistance to soiling and are easier to maintain.

Prince and MDR are pigmented leathers which fulfil the requirements of intensive usage of products that are easy and quick to maintain.

! For leather renovation, we recommend a special kit from the Swedish company Elmo, which you will find in the price list under the name Carekit Elmo and the identification code CB0002. The kit is suitable for all types of leather from our range.



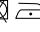




! As the manufacturer, we reserve the right to differences in the upholstery process if required by the shape of the backrest or seat and the material properties (ductility, pliability). In case of natural leather upholstery, we draw your attention mainly to the Split 373 and 374 armchairs, which we supply with two vertical lines of stitches on the inner side of the backrest. The Malmö 332 chair has sewn side pieces in the sides of the bent areas. The Leaf 437 and 439 chairs have horizontal seams at the bends of the seat part. Exceptions may apply to the upholstery also in the case of natural leather sent by the customer!

! A product upholstered with aniline leather becomes a new member of the household which requires regular care and careful handling. Since the leather has no surface finish, it is susceptible to scratching, absorption of fluids and dirt. Direct sunlight is also harmful to it. In time, the surface acquires a characteristic patina.

! Thanks to the pigment layer, the surface finish of semi-aniline leather is more resistant to sunlight, scratching, stains and fluids. But this does not mean that it does not require regular care.

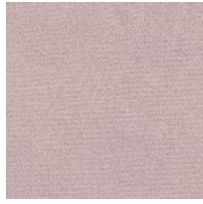
Category A

■ Brunei

Composition	Width	Abrasion resistance	Pilling	Flame retardancy	Ecology	Cleaning
100% polyester	140 cm	30 000 MD	4	BS 5852 Part 1	Oeko-Tex	      



18



29



31


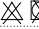
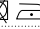




38



45

■ Fargo

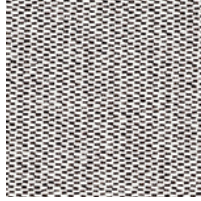
Composition	Width	Abrasion resistance	Pilling	Flame retardancy	Ecology	Cleaning
100% polyester	142 cm	62 000 MD	4-5	EN 1021 Part 1	—	    



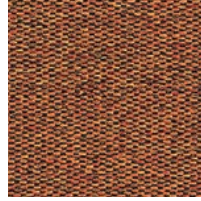
701



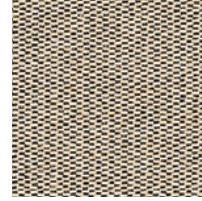
710



801



923








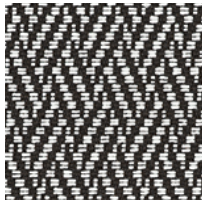
927



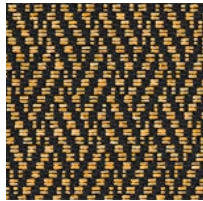
990

■ Harby

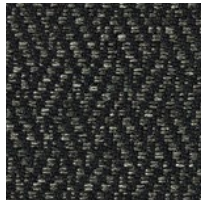
Composition	Width	Abrasion resistance	Pilling	Flame retardancy	Ecology	Cleaning
100% polyester	142 cm	62 000 MD	4-5	EN 1021 Part 1	—	    



801



810



990

Category A

■ Jim

Composition	Width	Abrasion resistance	Pilling	Flame retardancy	Ecology	Cleaning
56% cotton, 12% linen, 20% polyester, 12% viscose	142 cm	54 000 MD	4	EN 1021 Part 1	—	



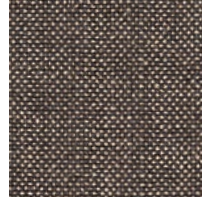
598



604



718



767



803



826



828



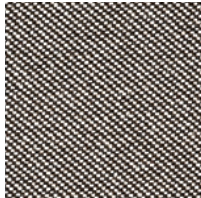
898

■ Lerma

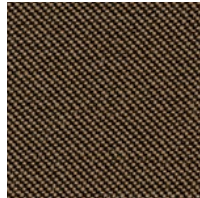
Composition	Width	Abrasion resistance	Pilling	Flame retardancy	Ecology	Cleaning
100% polyester	142 cm	112 000 MD	4-5	EN 1021 Part 1	—	



701



801



818



847



882



909

■ Luciana

Composition	Width	Abrasion resistance	Pilling	Flame retardancy	Ecology	Cleaning
57% cotton, 43% polyester	142 cm	40 000 MD	4	EN 1021 Part 1	—	



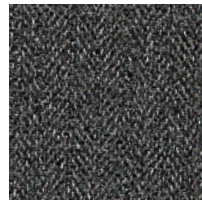
750



801



838





881

2

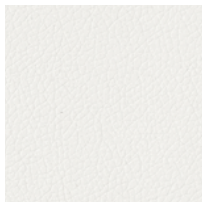
Category A

■ Grain

Composition	Width	Abrasion resistance	Pilling	Flame retardancy	Ecology	Cleaning
surface 100% polyurethane	140 cm	200 000 MD	—	BS 5852 Part 1 California TB117-2013 EN 1021 Part 1 & 2	REACH	
underlay 67% polyester, 33% cotton						



arcilla 75



blanco 00



canela 11



crema 02



gris 01



marino 69



marron 23



negro 90



rojo 29





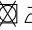



teja 15

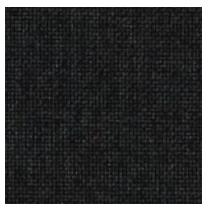


tierra 07

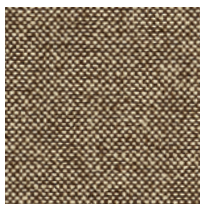
Category B

■ Jet Bioactive

Composition	Width	Abrasion resistance	Pilling	Flame retardancy	Ecology	Cleaning
100% Trevira® CS Bioactive	140 cm	65 000 MD	5	BS 5852 Crib 5 California TB117-2013 DIN 4102 Class B1 EN 1021 Part 1 & 2 NF 92501-7 Class M1 ÖNORM A 3800-1 Class Q1 ÖNORM B 3825	Oeko-Tex	     



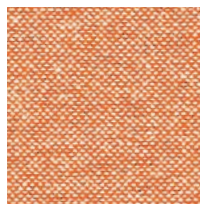
8033



9109



9110



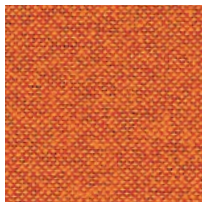
9301



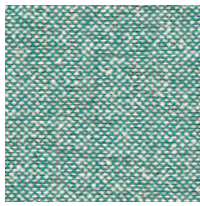
9304



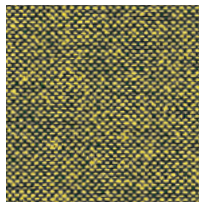
9401



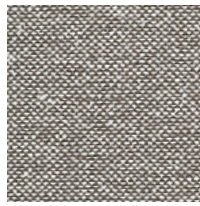
9403



9610



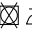
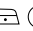



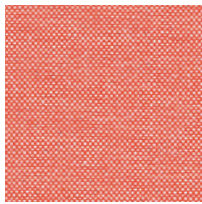
9702



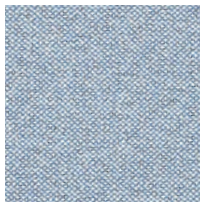
9804

■ Torino

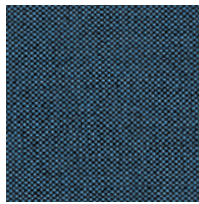
Composition	Width	Abrasion resistance	Pilling	Flame retardancy	Ecology	Cleaning
100% Trevira® CS	140 cm	70 000 MD	5	BS 5852 Crib 5 California TB117-2013 DIN 4102 Class B1 EN 1021 Part 1 & 2 NF 92501-7 Class M1 ÖNORM A 3800-1 Class B1,Q1,TR1 ÖNORM B 3825	Oeko-Tex	    



9401



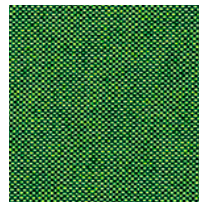
9601



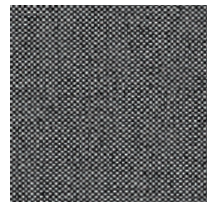
9616



9701





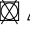
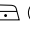






9707



9818

Category B


Palma NF

Composition	Width	Abrasion resistance	Pilling	Flame retardancy	Ecology	Cleaning
surface 100% vinyl	137 cm	300 000 MD	—	BS 5852 Crib 5 California TB117-2013 DIN 4102 Part 1 Class B1+B2 DIN 53438 Part 2 & 3 DIN 66084 P-a EN 1021 Part 1 & 2 NF P 92503 Class M1 ÖNORM A 3800-1 Class Q1 ÖNORM B 3825	REACH	    
underlay 100% cotton						    





We do not keep this material in stock. We order the required quantity for specific orders and there-

fore the lead time can be longer depending on the manufacturer's delivery terms.



 We provide a 2-year warranty for Palma NF artificial leather.

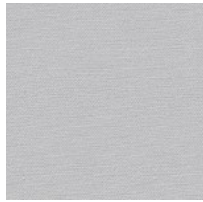
Category B

■ Silvertex®

Composition	Width	Abrasion resistance	Pilling	Flame retardancy	Ecology	Cleaning
surface 100% vinyl	137 cm	300 000 MD	—	California TB117-2013 DIN 4102 Class B2 EN 1021 Part 1 & 2	REACH	
underlay 100% polyester				NF P 92503 Class M2 ONORM A 3800-1 Class Q1 ONORM B 3825		

■ Silvertex® C5

Composition	Width	Abrasion resistance	Pilling	Flame retardancy	Ecology	Cleaning
surface 100% vinyl	137 cm	300 000 MD	—	BS 5852 Crib 5 California TB117-2013 DIN 4102 Class B2 EN 1021 Part 1 & 2	REACH	
underlay 100% cotton				NF P 92503 Class M2		



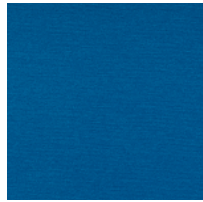
Aluminium 2101



Aubergine 7001 C5



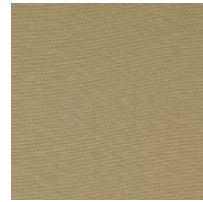
Avocado 2092



Baltic 3066 C5



Basil 5020 C5



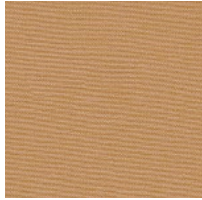
Beige 1010 C5



Black 9001



Bottle 5010



Camel 2105



Carbon 9002 C5



Celery 5019



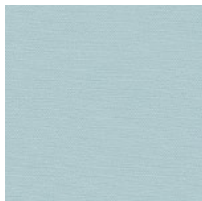
Champagne 1078



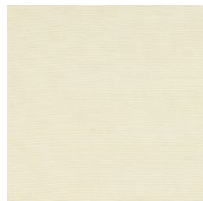
Citrus 2091



Cobre 2003 C5



Coral 2102



Cream 1077 C5



Delft 3067 C5



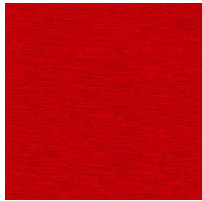
Forest 5063

Category B

■ Silvertex®



Graphite 4003



Grenadine 2095



Ice 4004

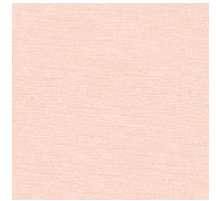
C5



Ice Cream 2090



Jet 3068



Lotus 2099

2



Luggage 0073



Macadamia 0001

C5



Magenta 7002

C5



Mandarin 6061

C5



Melon 6062



Meteor 4024

C5



Mocca 0005

C5



Orange 0013



Orchid 2097



Petrol 2094



Pistacho 5008

C5



Plata 4001

C5



Raspberry 2016



Red 2011

C5

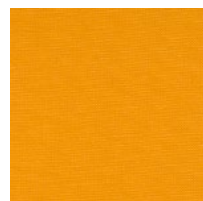


Rosé 2098



Rubin 6004

C5



Safran 6065

C5



Sage 5009



Sandstone 0002

C5



Sapphire 3007

C5



Shiitake 4012



Sisal 1051

C5



Skylight 2103



Squash 2093

Category B

■ Silvertex®



Sterling 4011

Storm 4002

C5

Sunkist 2012

Taupe 0009

C5

Teal 2100

Titanium 4010



Tomato 2096

Turquoise 3001

C5

Ultra Violet 2104

Umber 1014

White 2089

Wine 2064

We do not keep this material in stock. We order the required quantity for specific orders and therefore the lead time can be longer depending on the manufacturer's delivery terms.

Colours without C5 do not pass the fire-retardant test BS 5852 Crib 5.

■ Ginkgo




Composition	Width	Abrasion resistance	Pilling	Flame retardancy	Ecology	Cleaning
surface 100% vinyl	140 cm	150 000 MD	—	BS 5852 Crib 5 California TB117-2013 DIN 4102 Class B2 EN 1021 Part 1 & 2 NF 92503 Class M1 NF P 92504 Class M1 Önorm A 3800-1 Class Q1 Önorm B 3825	REACH	
underlay 100% cotton						

The artificial leather Ginkgo can be ordered in all colour shades according to the manufacturer's swatches. We do not keep this material in stock. We order the required quantity for specific orders and therefore the lead time can be longer depending on the manufacturer's delivery terms.

Category C

■ Ambra

Composition	Width	Abrasion resistance	Pilling	Flame retardancy	Ecology	Cleaning
100% polyester	134 cm	60 000 MD	5	BS 5852 Crib 5 California TB117-2013 EN 1021 Part 1 & 2	—	



1550



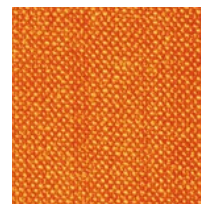
1551



1552



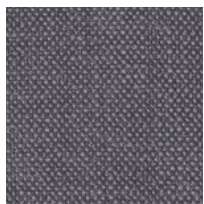
2550



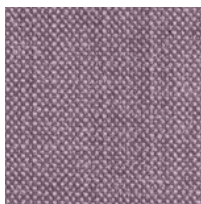
3550



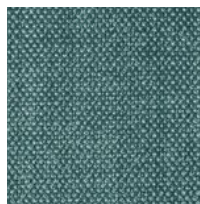
3551



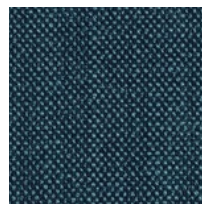
4550



4551



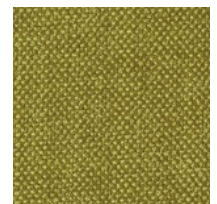
5550



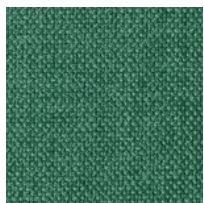
5551



5552



6550



6551



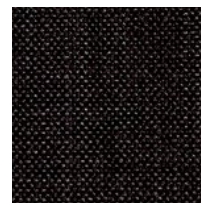
7550



7551



7552



8550



8551



8552




8553

We do not keep this material in stock. We order the required quantity for specific orders and therefore the lead time can be longer depending on the manufacturer's delivery terms.

! Occasional stains or colour changes of Ambra fabric are not a sign of product defect.

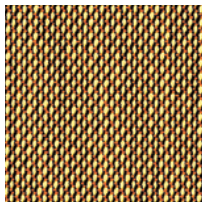
Category C

■ Garda

Composition	Width	Abrasion resistance	Pilling	Flame retardancy	Ecology	Cleaning
100% Trevira® CS	140 cm	80 000 MD	5	BS 5852 Crib 5 California TB117-2013 DIN 4102 Class B1 EN 1021 Class 1 & 2 NF 92503 Class M1 ÖNORM A 3800-1 Class B1,Q1,TR1 ÖNORM B 3825	Oeko-Tex	



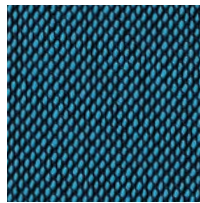
9301



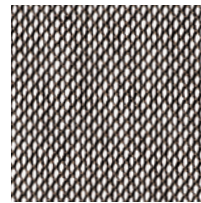
9307



9406




9616



9808

■ Lowlands Plain

Composition	Width	Abrasion resistance	Pilling	Flame retardancy	Ecology	Cleaning
70% recycled wool, 30% polyamide	140 cm	190 000 MD	3	BS 5852 Crib 5 California TB117-2013 EN 1021 Part 1 & 2	REACH	



513



516



521



524



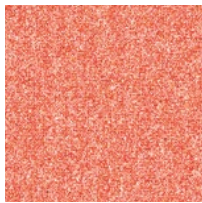
529



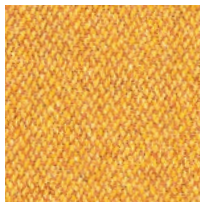
531



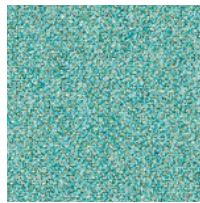
541



542



562



571



572



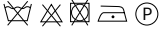
581



585

Category D

■ **Dante** 

Composition	Width	Abrasion resistance	Pilling	Flame retardancy	Ecology	Cleaning
95% virgin wool, 5% polyamide	140 cm	52 000 MD	4-5	BS 5852 Crib 5 California TB117-2013 DIN 4102 Class B2 EN 1021 Part 1 & 2	RAL-UZ 117 Appendix 2+3 REACH	



black



chrom

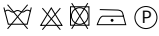


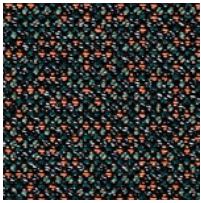
lanoso



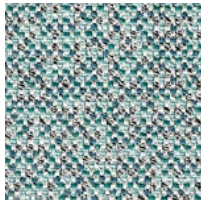
snow

■ **Mica** 

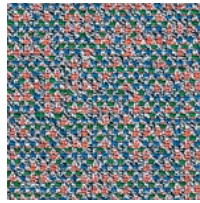
Composition	Width	Abrasion resistance	Pilling	Flame retardancy	Ecology	Cleaning
95% virgin wool, 5% polyamide	140 cm	70 000 MD	4-5	BS 5852 Crib 5 California TB117-2013 DIN 4102 Class B2 EN 1021 Part 1 & 2	RAL-UZ 117 Appendix 2+3 REACH	



arion




aqua

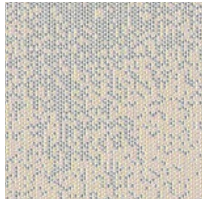


papillon

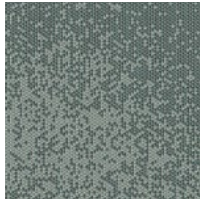
Category D

■ Milkyway

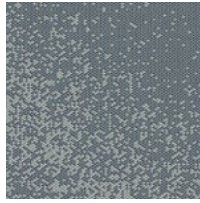
Composition	Width	Abrasion resistance	Pilling	Flame retardancy	Ecology	Cleaning
94% virgin wool, 6% polyamide	150 cm	50 000 MD	5	BS 5852 Crib 5 California TB117-2013 DIN 4102 Class B2 EN 1021 Part 1 & 2	RAL-UZ 117 Appendix 2+3 REACH	



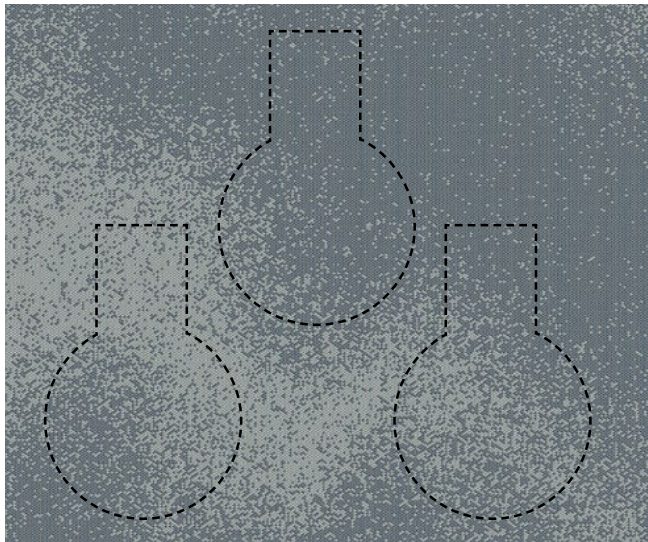
powder



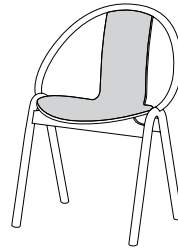
jade




shadow



! A high-quality fabric made from wool featuring the cosmic pattern of the Milky Way. Given the changing nature of the pattern, which repeats every three meters, each upholstered piece of furniture is an original - yet clearly part of the celestial colour scheme.



■ Sand

Composition	Width	Abrasion resistance	Pilling	Flame retardancy	Ecology	Cleaning
100% Trevira® CS	140 cm	50 000 MD	4	BS 5852 Crib 5 California TB117-2013 DIN 4102 Class B1 EN 1021 Part 1 & 2 NF P 92504 Class M1 NF P 92507 Class M1 ÖNORM B 3825	Oeko-Tex	



01/90



02/00



06/78





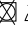
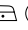


07/88

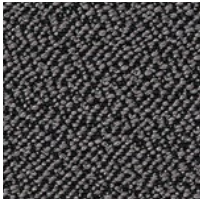


10/80

Category D

■ Sera

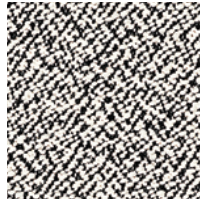
Composition	Width	Abrasion resistance	Pilling	Flame retardancy	Ecology	Cleaning
94% virgin wool, 6% polyamide	140 cm	122 000 MD	4-5	BS 5852 Crib 5 California TB117-2013 DIN 4102 Class B2 EN 1021 Part 1 & 2	RAL-UZ 117 Appendix 2+3 REACH	     



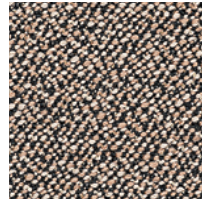
anthrazit



calla



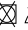
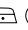




pepper



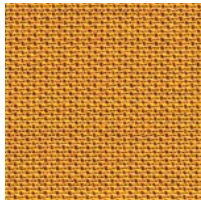
walnut

■ Topia

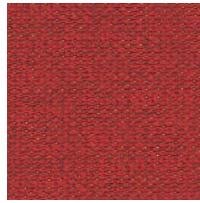
Composition	Width	Abrasion resistance	Pilling	Flame retardancy	Ecology	Cleaning
95% virgin wool, 5% polyamide	150 cm	50 000 MD	4-5	BS 5852 Crib 5 California TB117-2013 DIN 4102 Class B2 EN 1021 Part 1 & 2	RAL-UZ 117 Appendix 2+3 REACH	     



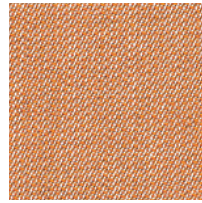
bronze



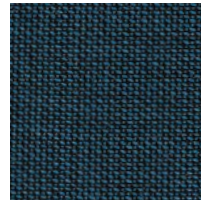
curry



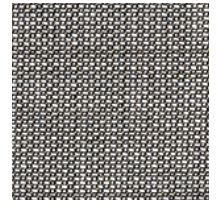
heart



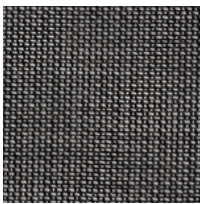
messing



orion



platin

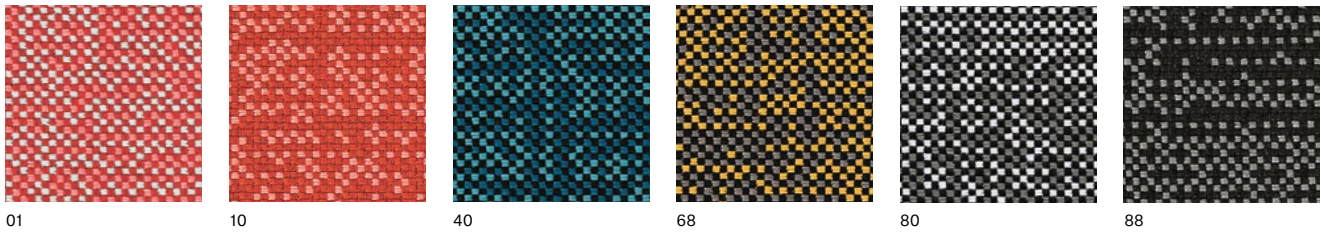


schiefer

Category D

■ Walker

Composition	Width	Abrasion resistance	Pilling	Flame retardancy	Ecology	Cleaning
100% Trevira® CS	150 cm	45 000 MD	5	BS 5852 Crib 5 California TB117-2013 DIN 4102 Class B1 EN 1021 Class 1 & 2 NF P 92503 M1 NF P 92507 M1	Oeko-Tex	



Category E

■ Alcantara® Avant

Composition	Width	Abrasion resistance	Pilling	Flame retardancy	Ecology	Cleaning
68% polyester, 32% polyurethane	142 cm	150 000 MD	—	BS 5852 Crib 5 EN 1021 Part 1 & 2	Oeko-Tex	

Included in this price group is Alcantara fabric, which can be ordered in all colours listed in the manufacturer's sample book. We do not keep this material in stock. We order the required quantity

for specific orders and therefore the lead time can be longer depending on the manufacturer's delivery terms.

Category 1

■ MDR*

Type of leather	Size	Thickness	Flame retardancy	Ecology	Cleaning
pigmented leather	± 4 m ²	0,80-1,00 mm	BS 5852 Part 0 & 1 California TB117-2013 EN 1021 Part 1 & 2	REACH	



0000


31174

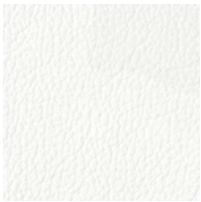
70386

71295

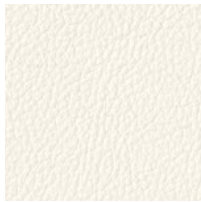
Category 1

■ Prince*

Type of leather	Size	Thickness	Flame retardancy	Ecology	Cleaning
pigmented leather	± 3,9 m ²	0,90-1 mm	BS 5852 Part 0 & 1 California TB117-2013 EN 1021 Part 1 & 2	REACH	



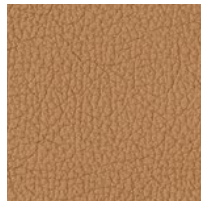
171



179



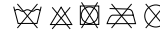
180



188

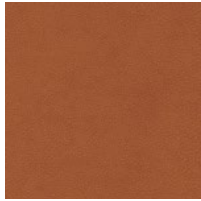
Category 2

■ Elmotique*

Type of leather	Size	Thickness	Flame retardancy	Ecology	Cleaning
aniline leather	± 5 m ²	1,00-1,20 mm	California TB117-2013 EN 1021 Part 1 & 2 ISO 8191 Part 1 & 2	REACH	



43024



43807

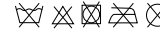


93957



99001

■ Elmosoft*

Type of leather	Size	Thickness	Flame retardancy	Ecology	Cleaning
semi-aniline leather	± 5 m ²	1,10-1,30 mm	BS 5852 Crib 5 California TB117-2013 DIN 4102 Class B1 EN 1021 Part 1 & 2 ISO 8191 Part 1 & 2 NF P 92503 Class M2 ONORM B 3825	REACH	

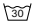

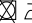
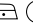

Elmosoft leather can be ordered in all colour shades according to the manufacturer's swatches. We do not keep this material in stock. We order

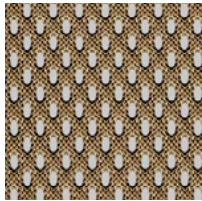
the required quantity for specific orders and therefore the lead time can be longer depending on the manufacturer's delivery terms.

* When using Elmosoft and shades of Prince, MDR and Elmotique outside of the TON standard selection, we reserve the right to charge the customer for any leftover leather in the hide. A hide size varies between 3.5-5.5 m².

Mesh

■ Polo

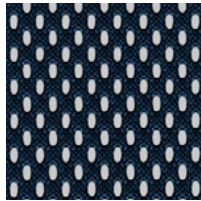
Composition	Width	Abrasion resistance	Pilling	Flame retardancy	Ecology	Cleaning
100% polyester	150 cm	100 000 MD	5	—	Oeko-Tex	    



beige 6



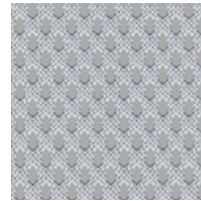
bianco 5



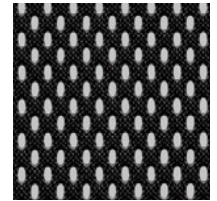
bleu 8



castoro 7



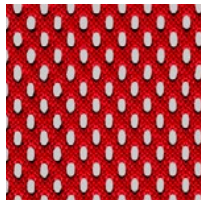
grigio 2



nero 1



piombo 9



rosso 10

Polo: an airy textile mesh which is used for back part of Chips lounge chair. It can also be used as an alternative to the cane seats and backs on classic bentwood models.

If used on a seat the Polo mesh is always combined with special underlay material for increased durability.

! The reinforcement mesh cannot be supplied on orders to Germany, Austria, Belgium, Switzerland, Luxembourg, the Netherlands and Liechtenstein.

Technical data

■ **Abrasion resistance** / The capability of upholstery materials to resist abrasive effects during the product use. Abrasion resistance is indicated in MD* units – EN 12947-2. The average MD value for HORECA market is 30 000 MD.

■ **Pilling** / Pilling can occur when materials, both natural and synthetic, rub against each other. It is an inherent feature of materials and has no effect on the fabric's function or durability. This feature is tested using the Martindale method modified according to the EN 12945-2 standard. The tested sample is then assessed on the scale of 1 to 5 (5 – almost no change; 4 – slight changes or pilling in an initial stage).

■ **Flame retardancy** / The capability of upholstery material to extinguish by itself as soon as the source of fire is removed. This means that the fabric burns only when it is exposed to direct fire, but is immediately extinguished when the source of fire is removed. The fabric will not ignite by itself. Fire resistance test regulations are numerous. Some manufacturers test their materials according to the standards applicable in individual Member States. The British BS5852 Crib 5 Standard is generally recognised, which stipulates high flame retardancy criteria.

■ **Ecology** / Oeko-Tex Standard 100 is a testing and certification system assessing the fabric's health safety. Test samples are tested for the presence of pesticides, heavy metals, formaldehyde, carcinogenic dyes, etc. REACH is an abbreviation which expresses the approach of EU Member States to chemical substances particularly in connection with protection of human health and the environment. The focus of interest are all chemical substances, particularly toxic, carcinogenic, mutagenic substances, etc. The most dangerous ones are subsequently placed on the list of banned substances (for instance, Lead, Nickel, Phthalates). The REACH Directive stipulates the obligation of manufacturers to prove the use of safe chemical substances and to provide consumers with information about the use of dangerous substances. RAL-UZ 117 are criteria stipulated in the Federal Republic of Germany for the assessment of upholstered furniture in terms of environmental protection, public health and service life. Environmentally-friendly products and materials are then marked with the "Der Blaue Engel" (Blue Angel) symbol.









■ **Cleaning** / Cleaning symbols provide information on the proper care of the material so that it is not permanently damaged by unsuitable care.



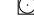



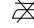
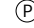
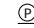


* MD unit (Martindale) represents one special movement of the machine which is testing the surface of textiles. The number of MD units represents the number of cycles during the testing up to the moment when the first fibre on the tested textile tears.

! Light colours of fabrics, artificial and natural leathers can be stained when in contact with other materials (non-colourfast textiles, denim, newspapers, magazines etc.). Staining by chemical reaction of colour pigments is not a sign of low quality of upholstery materials and therefore cannot be covered by warranty or claimed.

! Slight ripples and wrinkles can appear on upholstered products during the upholstery process or during the use of the product. These ripples or wrinkles can be determined by the characteristics of upholstery materials or upholstery technology and therefore cannot be subject to any claim.

List of symbols

-  Machine wash at a maximum temperature of 95 °C and normal agitation. Normal rinsing and normal spinning.
-  Machine wash at a maximum temperature of 60 °C with reduced agitation. Rinsing in water of decreasing temperature and gentle spinning.
-  Normal mechanical washing in a washing machine at a maximum temperature of 60 °C. Normal rinsing and spinning.
-  Machine wash at a maximum temperature of 40 °C and very limited agitation. Gentle rinsing and gentle spinning. No hand wringing.
-  Machine wash at a maximum temperature of 30 °C and normal agitation. Normal rinsing and normal spinning.
-  Machine wash at a maximum temperature of 30 °C and very limited agitation. Normal rinsing and gentle spinning.
-  Do not wash.
-  Bleaching products releasing chlorine can be used. Use diluted cold solution only.

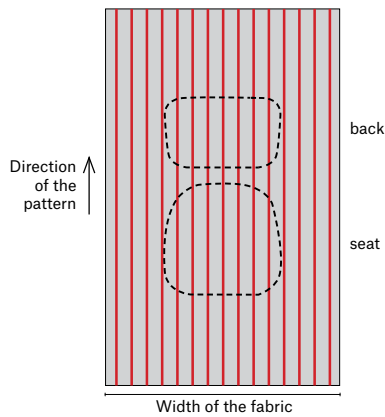
-  No bleaching products releasing chlorine can be used.
-  Can be tumble dried at a medium heat setting.
-  Drying in a drum dryer with a mild drying programme at a lower temperature.
-  Do not dry in a tumble dryer.
-  Maximum iron temperature 150 °C.
-  Maximum iron temperature 110 °C. Caution when using steam iron.
-  Cannot be ironed, steamed or otherwise treated with steam.
-  Can be dry-cleaned with tetrachlorethene (perchloroethylene) or solvents under a similar symbol with the letter F. No cleaning process restriction.
-  Can be dry-cleaned with tetrachlorethene (perchloroethylene) or solvents under a similar symbol with the letter F with limited water added, with limited agitation or with limited drying temperature.
-  Upholstery cannot be cleaned chemically. Do not remove stains with organic solvents.
-  Hand wash on 40 °C.

- ⊕ Healthcare
- ⊖ Water resistant
- ⊗ Blood and urine resistant
- ⊘ Easy to clean
- ⊚ Desinfectant resistant
- ⊛ Antimicrobial
- ⊜ Maritime sector

Customer's own material

If our range of upholstery materials does not meet your needs, you can provide your own material. The required amount of material as stated in the price list is calculated per piece on orders of more than 10 pieces. For orders of 1 to 10 pieces, the required amount should be consulted with a sales representative. For fabrics and vinyls, the calculation in the price list is based on material width of 140 cm. If you have a material with a different width, we recommend that you contact a sales representative to confirm the amount of material required.

When upholstering furniture we work with the customary direction of a pattern, which can influence the final look of the upholstery. When supplying fabric with a distinctive pattern, we recommend that customers consult with us in advance to agree on the way the pattern is to be used.



! Fabrics, artificial leathers and natural leathers should be sent in rolls only. Artificial leather and natural leather in particular can be subject to deformation when folded and such damage can be irreversible!

! In case of COM, mark distinctly what shall be the face side. If the customer's fabric is chequered, striped or is of another special design which can be upholstered both horizontally and vertically, indicate how you wish to place the design on the seat and backrest. In this case, the material consumption can be higher than expected. If the face side or the direction of upholstery is not marked, we reserve the right to determine it by ourselves.

! Regarding upholstery with customer's own material (COM), we reserve the right to refuse any material which is not suitable for upholstery of our seating furniture or is not delivered in the requested state.

Decorative stitching

The Split lounge armchair features decorative stitching along the top edge of the backrest and the armrests. The customer chooses the colour of the stitching and has the option to either highlight or downplay this decorative element.



Sale by the metre

Fabrics and artificial and natural leather are also available for sale by the metre. Provided the required material is in stock in an adequate quantity, we can dispatch it within 5 days. If not, the lead time depends on the delivery terms of our supplier

and could be between 2 and 4 weeks. For fabrics and artificial leather, the minimum order quantity is 0.5 m. Leather can be ordered only in pieces, i.e. about 4 to 5 square metres. The current price will be given to you by the seller.

Flame retardant PUR foam

If the product should meet safety standards for public spaces, we also offer upholstery with flame retardant. These PUR foams meet the requirements of the BS 5852, Crib 5 British standard.

Surcharges are listed in the price list. Selected models have the flame retardant PUR foam in standard versions. In such cases, no surcharge is listed in the price list, only the symbol *.

Decorative nails

Upholstery of selected models can be complemented by decorative nails, especially if upholstered with artificial or natural leather. Antique bronze is our standard nail. Surcharge for decorative nails is listed for applicable models in the price list.



Decorative nails

! Please note that small fragments of plastic material that was used to position the nails may appear around the decorative nails.