

DeskWall

**Spring Edition '23**

 **Gesab**  
guarantee for the future



# DeskWall

The unified platform for  
visualization, control & management

Global interoperability and universal connectivity of different systems, applications, processes, and sources of information in a seamless, efficient, and uninterrupted manner, regardless of their technology, type, or origin.

# Take [Ctrl]



Control rooms have changed radically in the last few years, requiring more advanced tools than the currently platforms. The operators need more dynamic, ergonomic, flexible and collaborative solutions that allow them to be in absolute control and also improve their well-being.

Our experience in operational positions has helped us to develop DeskWall, which has changed how operators work worldwide. A revolutionary solution that has forever transformed control centres.



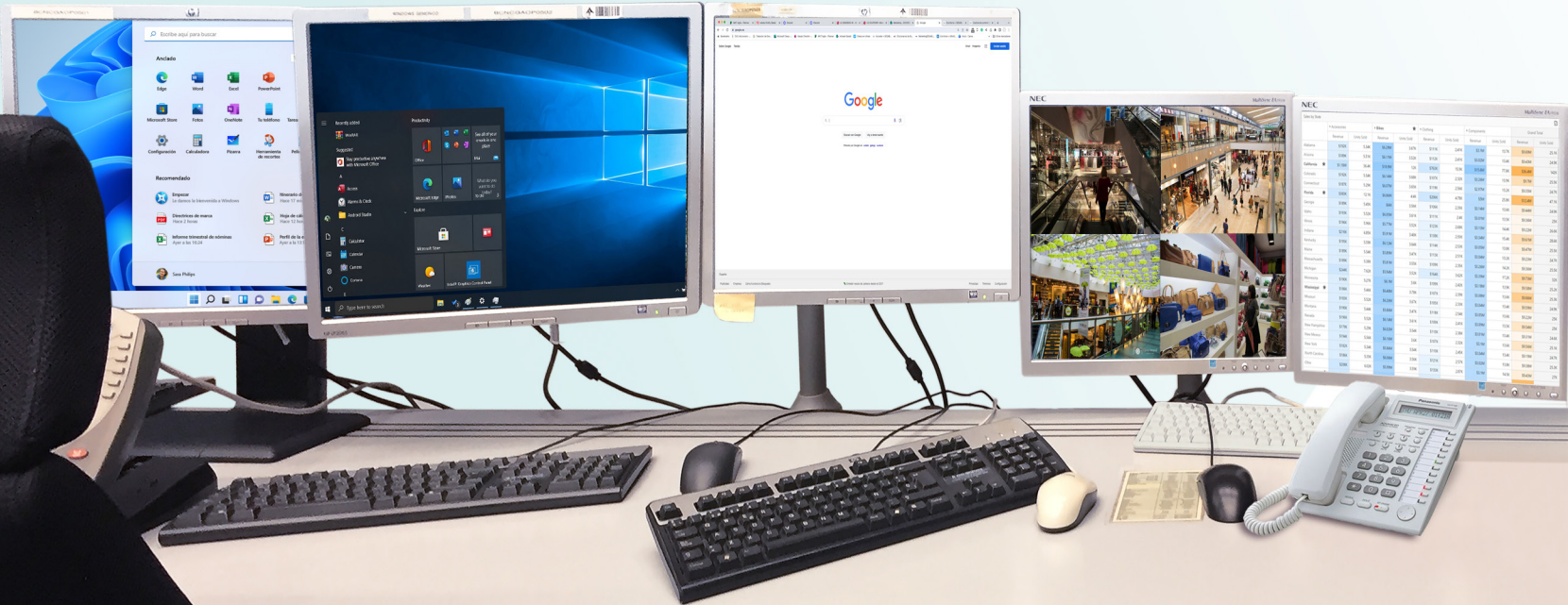


# Limitless display



DeskWall makes the growing complexity of systems and the large amount of information an intuitive experience. A global, personalised and flexible visualisation of multiple sources to keep everything under control, with a single keyboard and mouse.

Better, faster decisions and more efficiency in operator positions.





# Total immersion



The DeskWall combination with curved and large-format screens offers a single display experience. A better and more natural viewing angle thanks to stability in brightness, contrast and colours. Total immersion to achieve a last generation display.



# New developments and improvements

## **Spring edition '23**

Our Customer Validation Development (CVD) process is key to the continuous improvement of our products and solutions. Every new feature and enhancement presented in this exciting “Spring Edition ‘23” has been developed, rigorously tested, and deployed in collaboration with our valuable customers and across a wide range of operational positions.





# OmniMouse

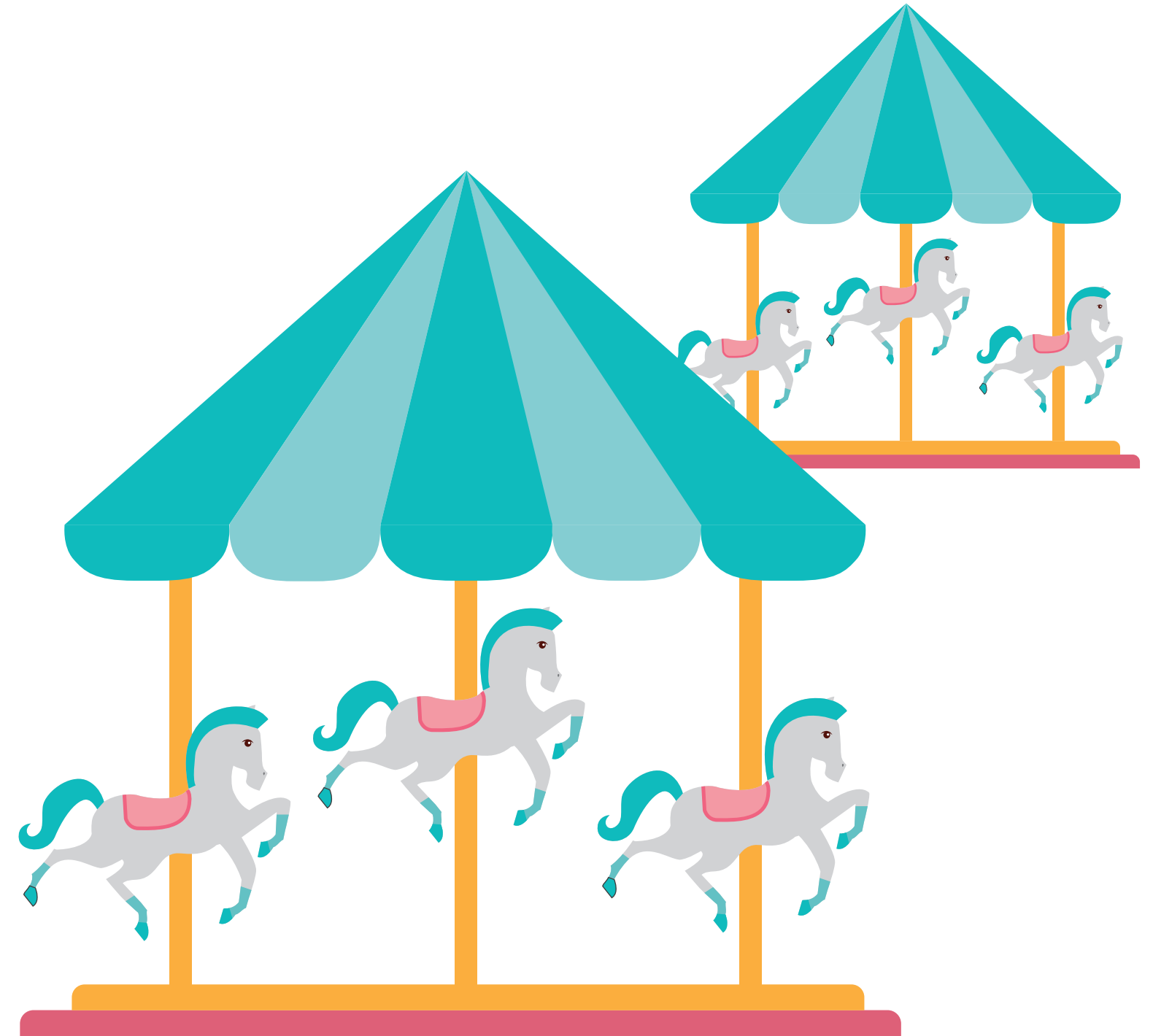
GESAB presents the revolutionary and exclusive OmniMouse, the universal mouse that has redefined the operators' control experience. With a single mouse, they will now be able to precisely control and manage any application, source, platform or operating system in real time and with zero latency. OmniMouse raises the operators' productivity to the highest level.

- Zero latency
- Real time
- Clickless

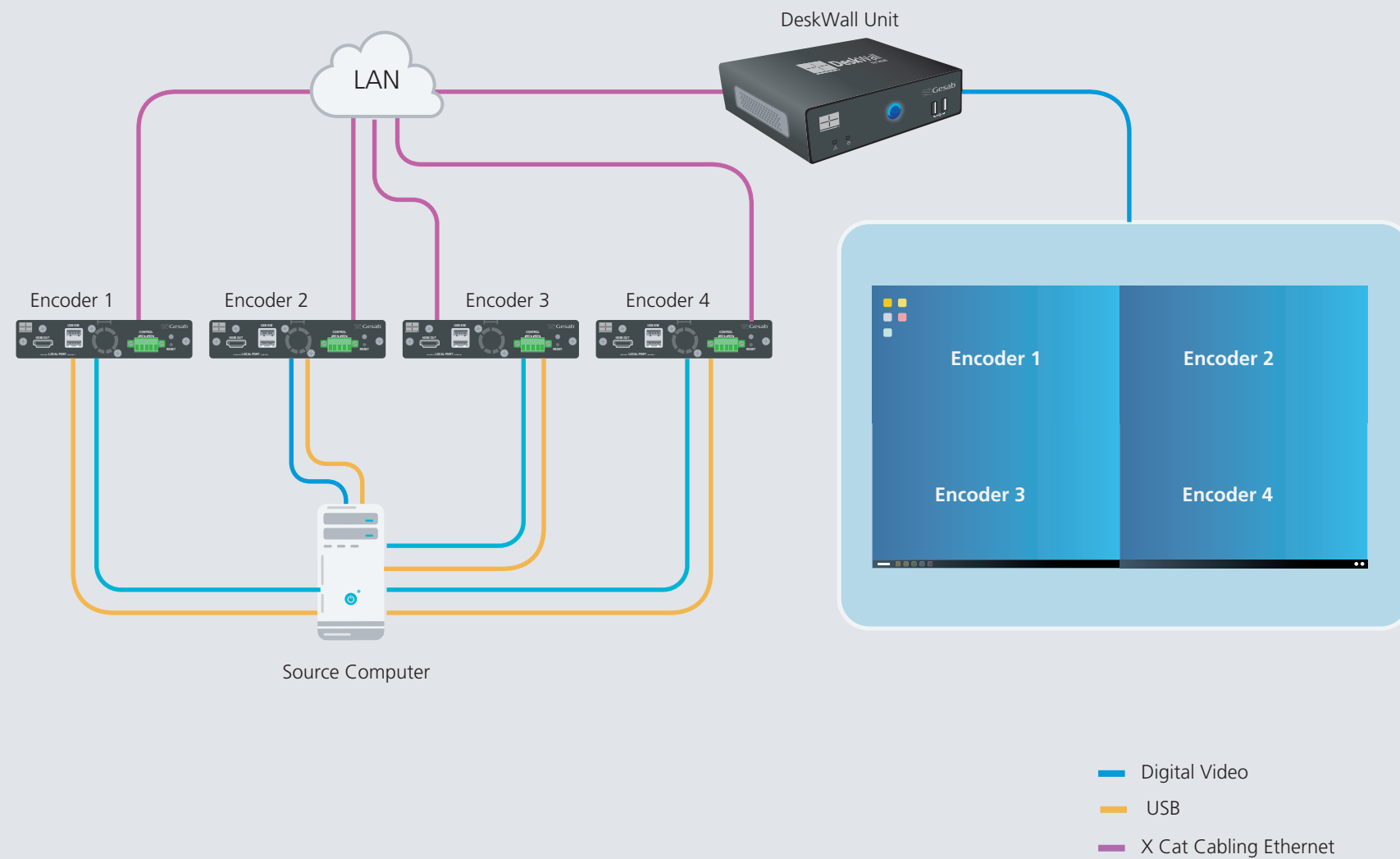
# Carrousel

DeskWall unleashes the magic in the Carrousel areas, allowing the user to dynamically manage and to rotationally and automatically display any of the sources of information. It also provides the option of defining the transition time, as well as adding, changing or eliminating sources without limits.

- Multi-areas
- Multi-sources
- Dynamic areas





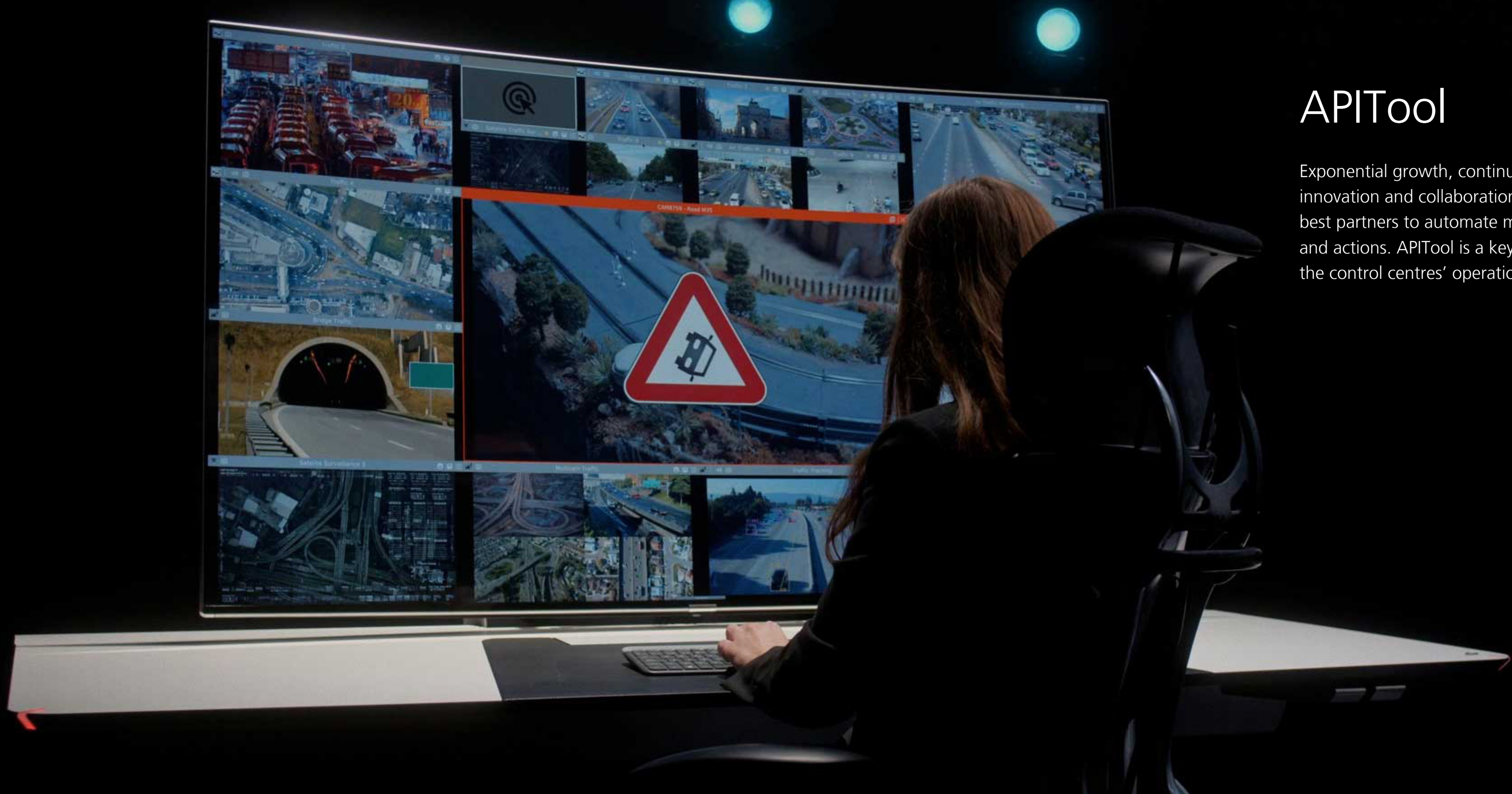


# Multihead System

DeskWall has introduced the innovative Multihead system, which allows merging multiple video outputs into a single, fluid desktop. With Multihead, users experience absolute control over applications and content, without the need to switch windows.

Multihead System simplifies the workflow, maximises productivity and provides a flawless visual experience.

- Group source from 2 outputs
- Drag and Drop
- OmniMouse Ready



# APITool

Exponential growth, continuous innovation and collaboration with the best partners to automate management and actions. APITool is a key element in the control centres' operations.



# Maximum flexibility

The ability to adapt to new requirements and environments is a key element in critical work management stations. Facility and rapidity in the transformation of operating functions mark the path of growth of the operator's productivity.







## Canvas with up to 16k resolution

DeskWall allows for the creation of a desktop of up to 12k horizontal, or a combination of configurations 8k horizontal, 4k, 2k and FullHD, in a completely flexible and free way, thus creating a personal video wall tailored to the specific needs of each operator.



## Multi-Source Windows

They combine multiple sources of information and systems (OS) in a single space. Windows, MacOS, UNIX, IP video, streaming, web services, WebApps, VDI, Remote access, Encoders o KVM IP.

Feel the power to control any source with a single keyboard and mouse.



## Templates & Personal-Layouts

DeskWall offers the exclusive grid creation system known as GRIXEL "Grid Pixel by Pixel". The grids can be homogeneous or heterogeneous to fit perfectly with each operator's display, operational and ergonomic needs.



Multi-canvas 2 monitors 43" 4k canvas (8k horizontal)



## MIA

The MIA (Main Interactive Area) enables users to position and adjust any source to full size with a single click, so that they can quickly and easily have the information available in their main area.



## Virtual Desktop

Experience up to 32k resolution in an invisible, active dual desktop in the DeskWall screen. Instantly interact and switch between desktops. The desktops are independent, and the windows can be shared or reconfigured at any time by means of an intuitive drag & drop management interface.



## Visual Ergonomics

Enjoy a fully immersive visual experience without distractions. DeskWall works perfectly with large format, curved and ultrawide screens, delivering unique and exclusive visual ergonomics.





## Intuitive Management

DeskWall provides the user with all of the necessary tools for an easy, quick and intuitive management, delivering an unparalleled experience.



## Smart Mouse

The Smart Mouse option allows the operator to automatically control the multi-canvas when positioned over the window.



## Smart ToolBar

This technology provides each source multiple active actions and personalised settings, amazingly enhancing its management.



## Preferences

With DeskWall, each operator can personalise and configure a wide range of features according to their preferences.



## Multimedia

Multimedia controls for 360 management. A sound and microphone system that provides the operator with all the tools for an overall management, as well as various peripherals.



## Follow-me

Automatic restoration of the last status of the multi-canvas, keeping the configuration set by the operator and the different customized layouts, regardless of the DeskWall unit being used.





## Scalability

Thanks to its modularity, the DeskWall system is completely scalable, with no limits of any kind. Extensions can be made in new sources, operational positions and user accounts, among others.



## 24x7x365

DeskWall is especially designed to work in critical environments with 24/7 operability. Its robustness allows the system to work continuously without requiring periodic restarts.



## APITool

Connection, control and management are all in the DNA of DeskWall. APITool, the new GESAB tool that can be used to connect modules and applications in your control centre by automatically launching actions, events and alerts, among others.



## DataWall

DataWall is a videowall processor natively integrated into DeskWall that enables both systems to share information with uniform operability. This integration facilitates managing the operational centres.





## DeskWall Share

DeskWall Share allows operators to visualize and share information with other operators, even surrendering control to one another if it were necessary. A world of possibilities that can be configured to meet the needs of each client.



## Collaboration

DeskWall allows for a controlled collaborative work in the areas that need such collaboration, improving coordination and information transmission. Built-in chat and instant messaging capabilities and the possibility of integrating multiple external platforms.



## Role Management

DeskWall Roleplay Management simplifies user management by enabling the creation of personalised profiles with functions and services suited to each operator according to their role or activity.



## DeskWall Manager

DeskWall's configuration and administration module offers a powerful, easy-to-use and intuitive tool. It provides the administrator with the capacity to manage all the system's functionalities.



# Collaborating

Working with and for the people has always been an obsession for GESAB. The best possible ergonomics for optimizing the operators' work. DeskWall provides efficiency, productivity and the power to control large amounts of information in the best way possible.





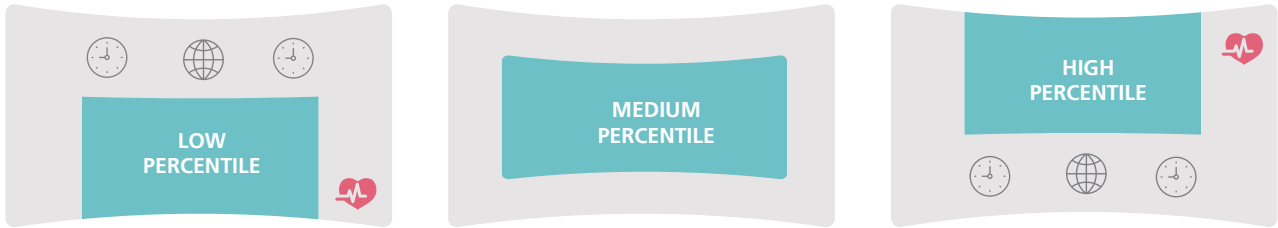
# People at the heart of it all

Our passion is to drive technological progress while keeping people at the heart of it all. We are committed to transforming the operational position through advanced, secure and customisable technology products and solutions, providing intuitive and fluid interaction with technology and ensuring the wellbeing of people. We care about vital aspects such as ergonomics, health and emotional balance.

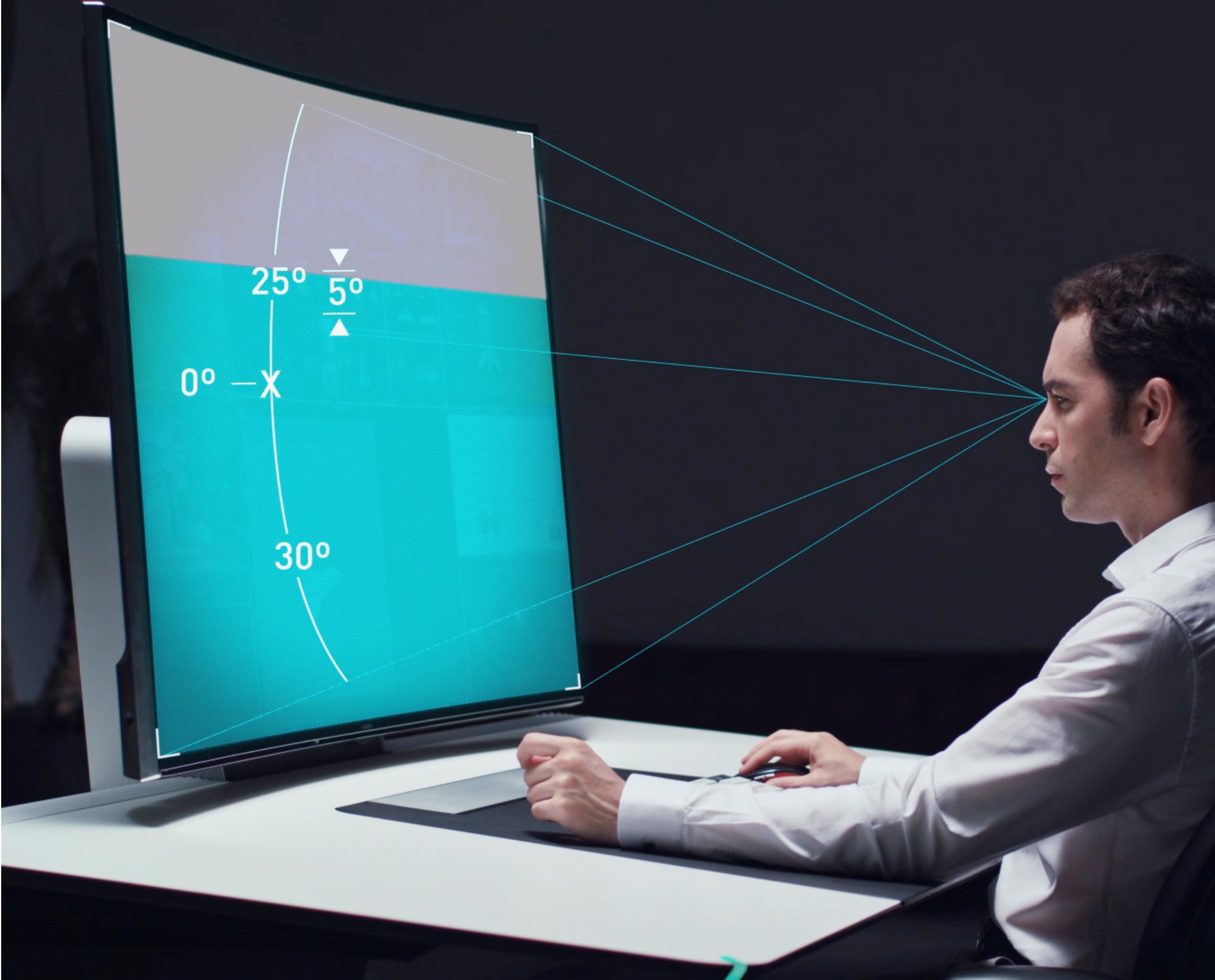


# Visual ergonomics

GESAB has redefined the new standards of visual ergonomics in the operational position thanks to immersive canvases. DeskWall is the technology that best adapts to the human eye. Sit in the middle of the action and enjoy a visual experience totally immersive and without distractions.

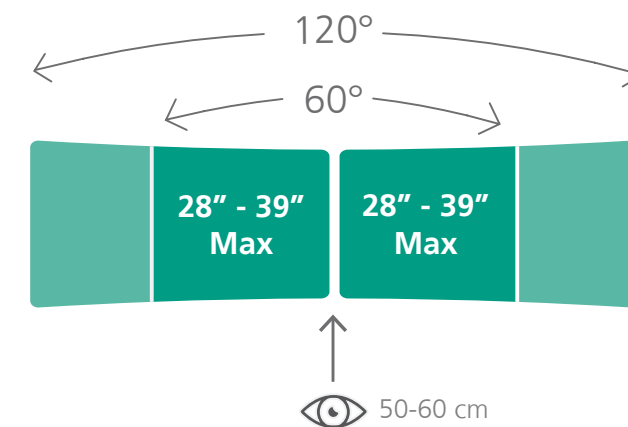
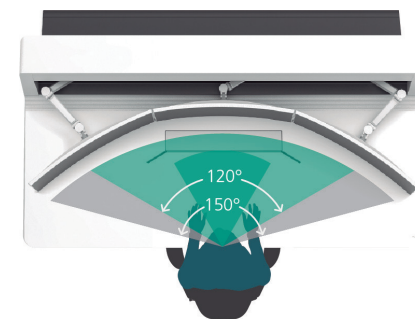
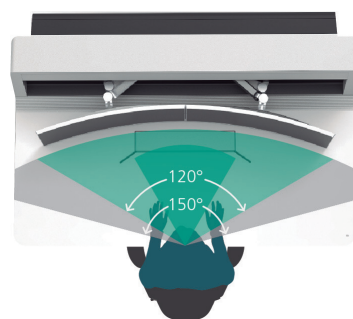
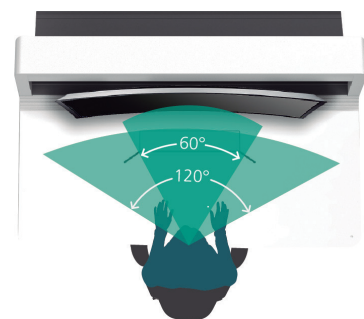
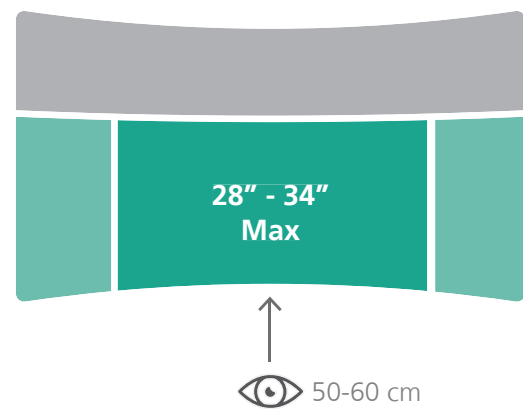


● Main work area    ● Canvas





# Digital visual ergonomics



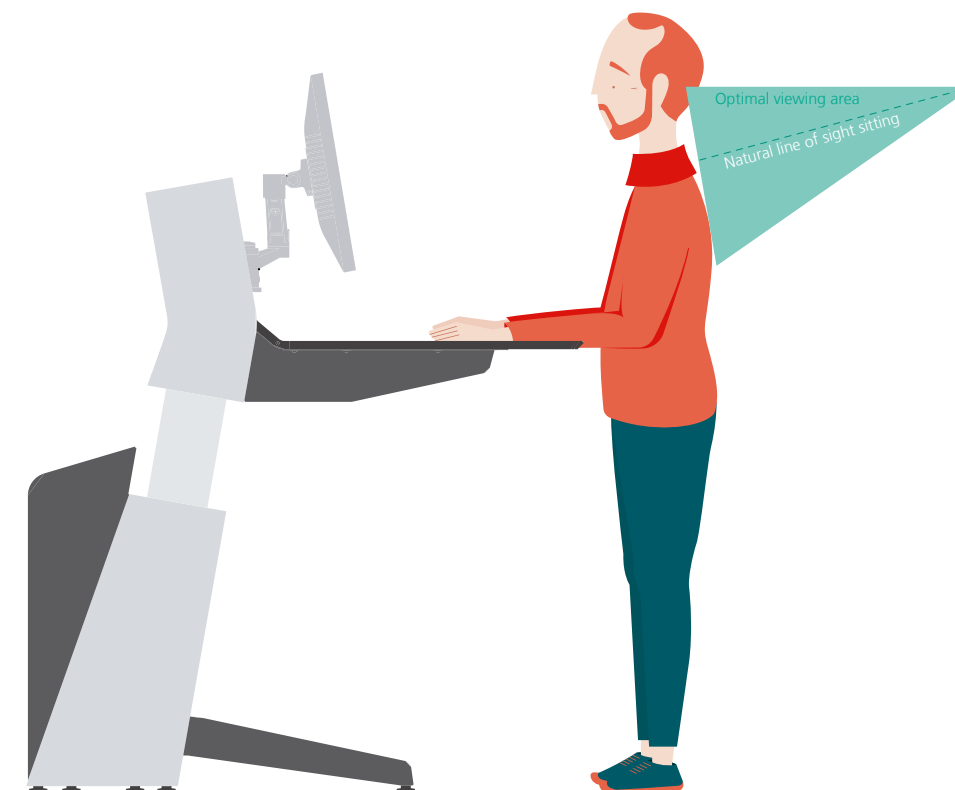
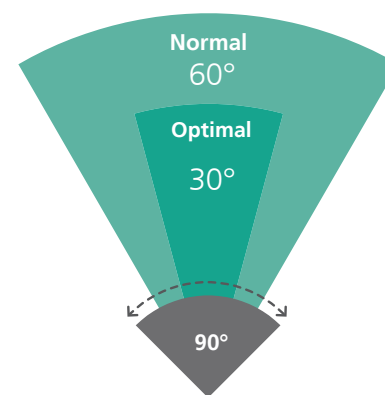
Primary area

Main area

Secondary area



Vision angle

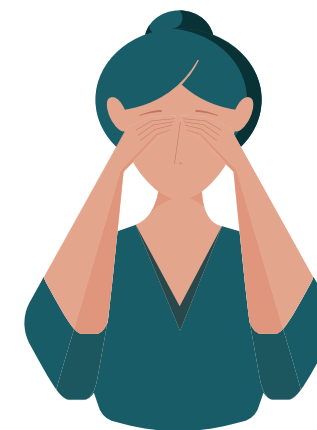
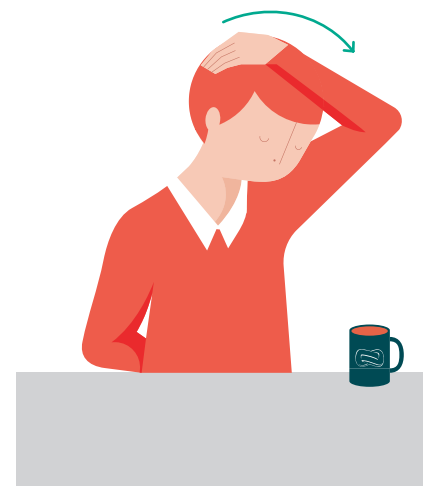
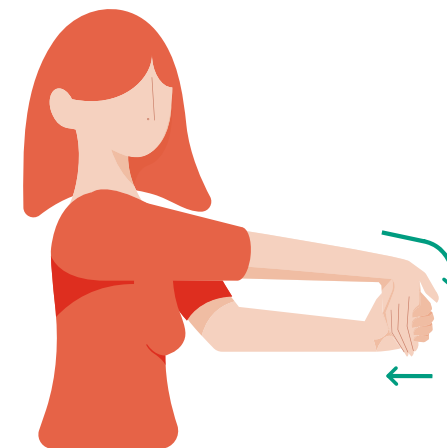
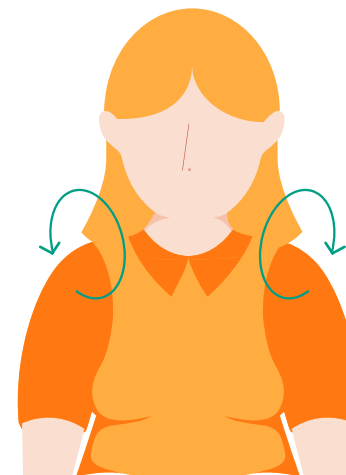






# Health

The concept of ergonomics has taken one step further. DeskWall system incorporates GESAB Health & Care smart widget, a tool that helps to improve operators health at their work place in critical environments, as well as prevent possible diseases and maintain adequate physical activity.\*



\*Ask for your GESAB care guide at: [info@gesab.com](mailto:info@gesab.com)



# UX Ready

At GESAB we are proud to work and collaborate with SPECIALISTERNE, a company specialising in multidimensional performance, stress and usability matrix tests, but more importantly a social organisation incorporated in Denmark in 2004, with current direct or indirect representation in 25 countries, and engaged in the labour inclusion of people with autism and other diagnoses within neurodiversity.

SPECIALISTERNE has certified the usability protocols in the following sections: intuitive design, ease of use, handling agility, customisation capacity and user settings.

The DeskWall platform has also been subject to test protocols with over 12,000 variables and a total of 144,000 validations, guaranteeing the platform's reliability and robustness and obtaining the corresponding certificates.

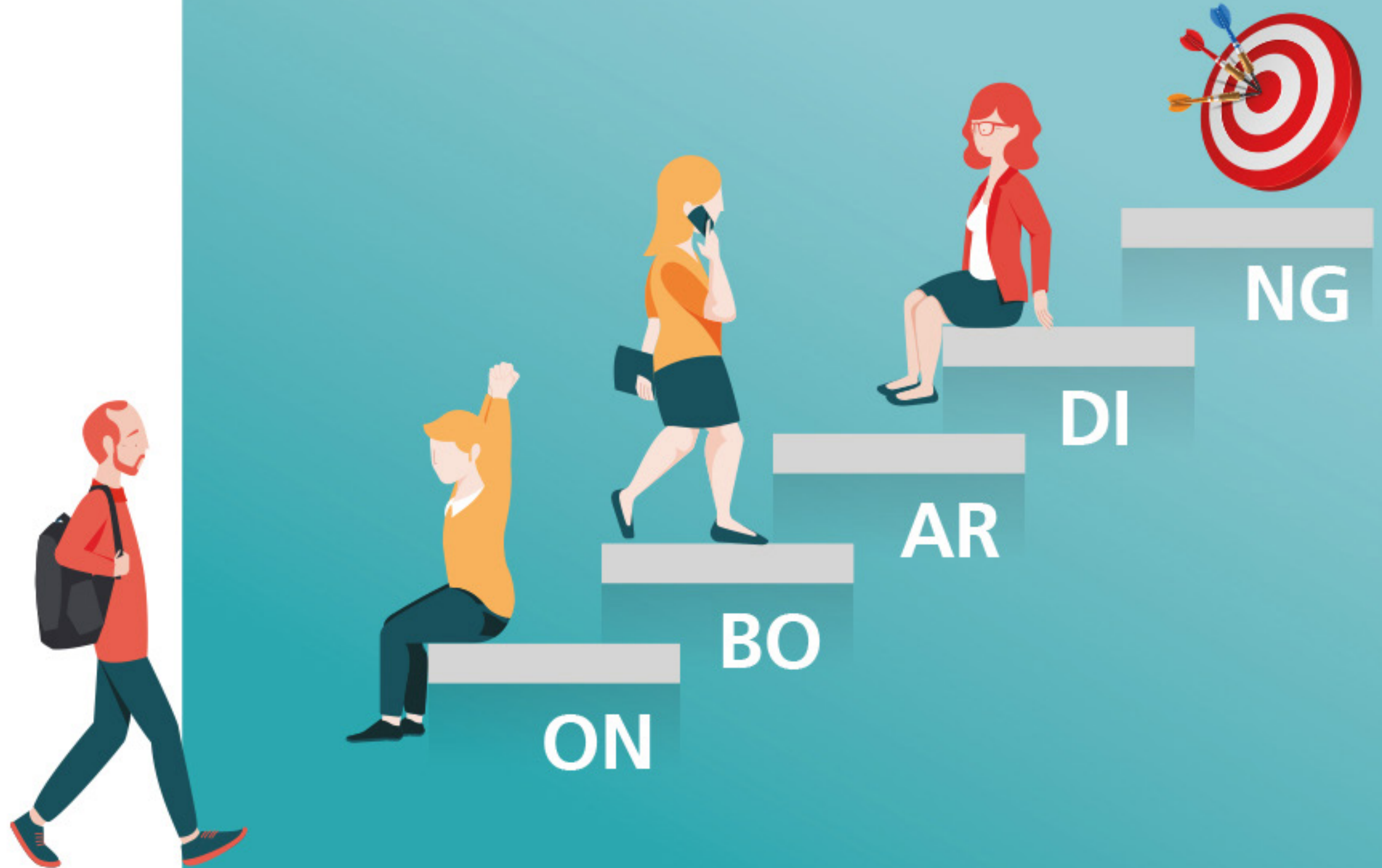




# Support and Services

GESAB, a pioneer in implementing KVMs in control centres since 2005, has gained a solid reputation thanks to its extensive experience, which is a guarantee of success in all implementations. We fully understand the challenges and obstacles of each project, including people's adaptation to change. At GESAB we are proud to offer our customers full support from the beginning of the project and throughout the entire process forward.

Our main purpose is to ensure that each operator enjoys an exceptional experience, enhancing their productivity and positively transforming their way of working. We strive tirelessly to achieve success in all the projects we undertake, offering solutions suited to the specific needs of each customer.





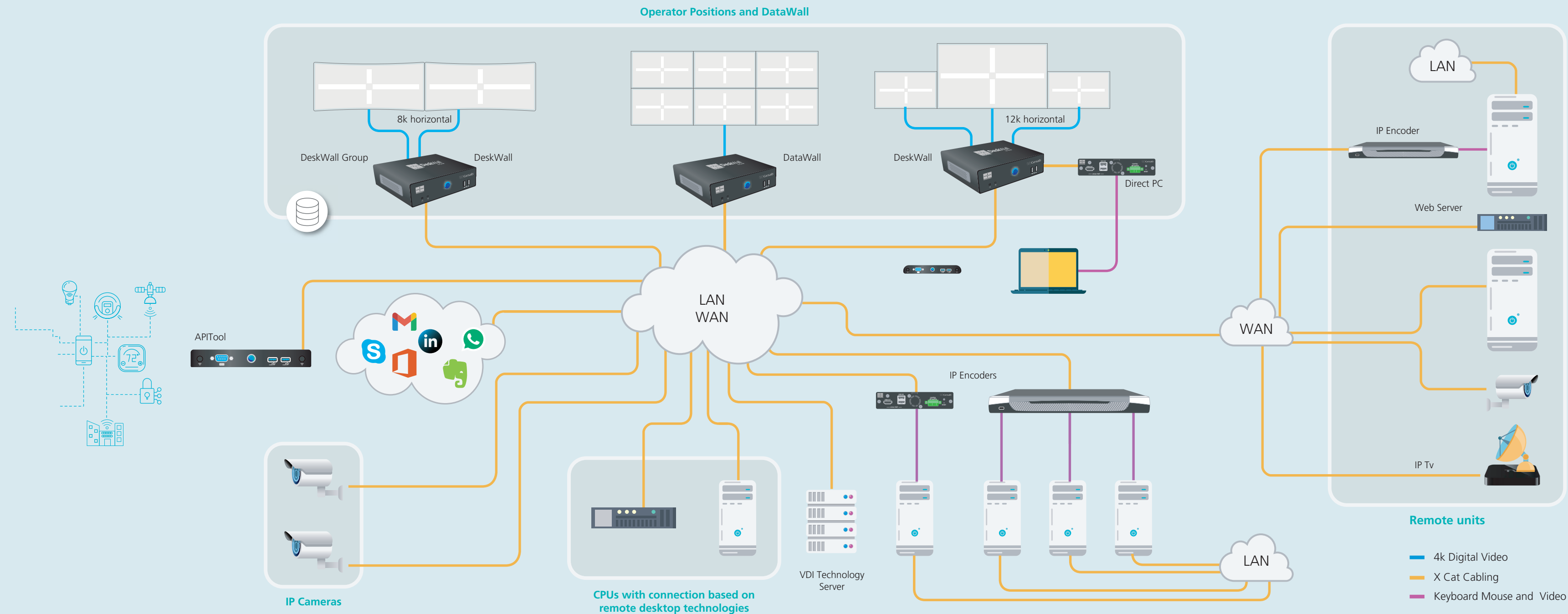
# The Power to Control

DeskWall simplifies, optimises and protects operational positions, offering a non-intrusive, scalable solution tailored to each customer.

With a solid architecture, amazing versatility and undeniable security, it is the ultimate platform for high-availability operating environments.



# DeskWall Architecture





# Universal Control

## Encoder Pro:

- Monochannel
- Multichannel
- Multihead

## Web Browser:

- Chrome kiosk
- Web URL

## Remote Control:

- RDP
- VNC & REAL VNC
- NX

## VDI:

- Citrix
- Horizon View
- Hyper-V by RDP

## Vídeo:

- RTSP, RTP, UDP...







## Replicated databases

All databases are automatically replicated in each DeskWall unit, always guaranteeing the continuity of the system and allowing for hot replacements.



## DeskWall Manager

The configuration and administration module offers a powerful, intuitive and easy-to-use tool for the administrator to manage all system functions in a reliable and redundant environment.



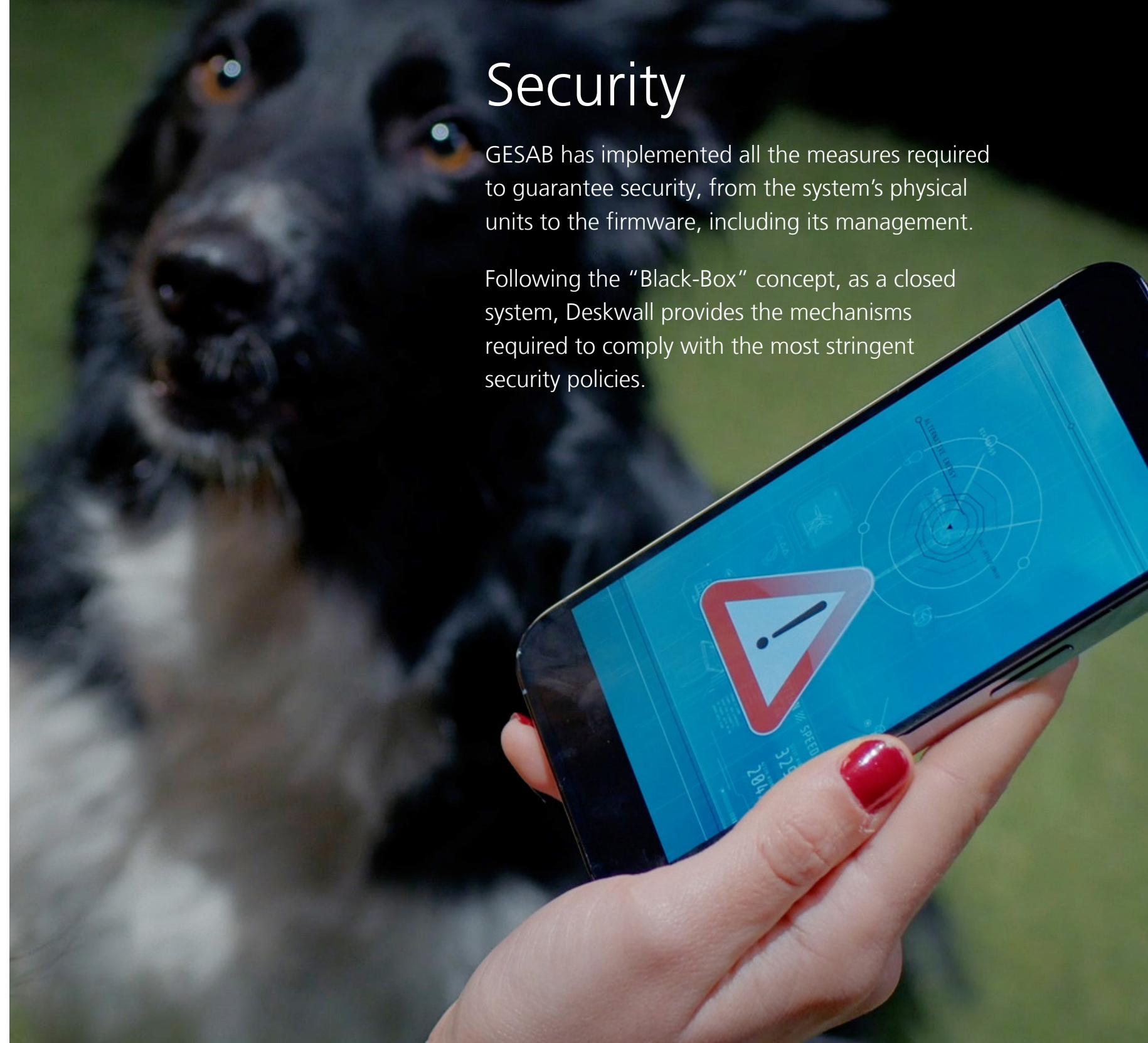
## Access Redundancy

DeskWall provides redundancy in the credentials system, enabling local authentication with users, groups and permissions and full integration with active directory domains (LDAP).

# Security

GESAB has implemented all the measures required to guarantee security, from the system's physical units to the firmware, including its management.

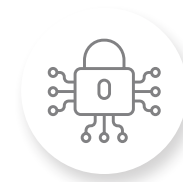
Following the "Black-Box" concept, as a closed system, Deskwall provides the mechanisms required to comply with the most stringent security policies.





# Cybersec

DeskWall has been designed under the highest security standards, combining the best practices in cybersecurity and our partners' recognised experience, to offer comprehensive and secure solutions for critical and sensitive environments.



## Cybersecurity

All communications between DeskWall and Encoder units are carried out using 128- and 256-bit AES encryption, with military-grade security. This guarantees that the information is protected against any possible attack or attempted intrusion.

AES (Advanced Encryption Standard) is a cryptographic algorithm approved by the US government and recommended by the National Institute of Standards and Technology (NIST in FIPS 197).



## Encoders Pro

- TLS
- IPv4 and IPv6 networks
- Local authentication with users, groups and permissions
- SSL certificate loading
- AES encrypted video, control and AV transmissions
- Minimum and efficient bandwidth
- Access and control at the BIOS level
- HTML and DeskWall federated remote access

# Technical specifications

DeskWall Series		DWP7600	DWRT101
Dimensions	An x Alt x Prof (mm)	166 x 48 x 177	140 x 30 x 144
	An x Alt x Prof (inch)	6.53 x 1.89 x 6.97	5.51 x 1.18 x 5.67
Volume (litres)		1.4 L	0.6 L
Weight (kg,lbs)		1.74 kg / 3.84 lbs (N.W.)	0.65 kg / 1.42 lbs (N.W.)



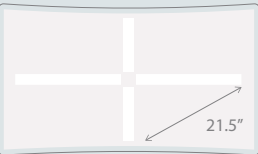
Certifications: CE, UL, FCC, BSMI, ErP, CNUS, RoHS, EMC, LVD, ITE.



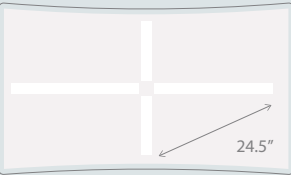
## Canvas and configurations

### Immersive Canvas (4k)

43"



49"



### Immersive Multi-Canvas

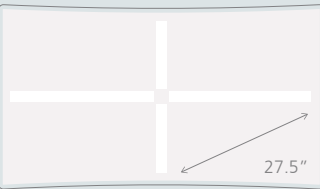
2 x 21" – 34"



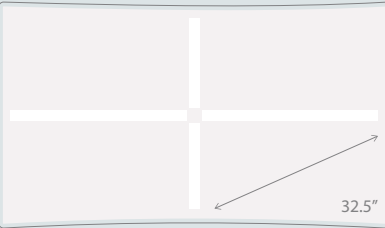
3 x 21" – 34"



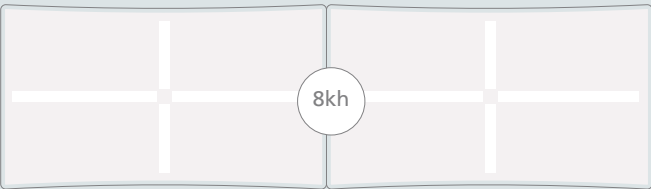
55"



65"



2 x 43" – 55"



### Other Configurations



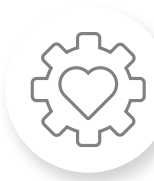
### Mixed Configurations





# Key benefits of DeskWall

DeskWall provides a large number of benefits in the corporate, operational and personal area, raising operator efficiency and company profitability in the short term.



## Corporate

- Operational management savings
- Real state efficiency
- Innovative environment, healthy and technological referent
- Design and corporate image (order and aesthetics)
- Attracting and retaining talent



## Operational

- Increased productivity
- Greater profitability and efficiency
- Increases collaboration and participation
- Improves decision making / resolution capacity
- Decreased risk of laboral diseases



## Personal

- Visual and ergonomic comfort
- Increased efficiency and flexibility
- Better adaptation to changes
- Reducing work stress
- Motivates to a healthy way of life



## Guarantee for the future

GESAB is firmly committed to technological innovation, continuously improving operational positions, driving productivity, operational continuity and the wellbeing of people. These are the foundations for ensuring a solid and successful future for our customers.





Tech GESAB

**Barcelona**

938 427 050  
Avda del Mogent 68  
08450 Llinars del Valles

**Madrid**

915 345 064  
C/ Marzo 61-67  
28022 Madrid

**Mexico City**

+52 55 1997 0746  
Homero #1205 Piso 3  
Mexico City 11550

**Bogota**

+57 317 4396677  
Carrera 13 # 96 - 67  
Bogota, Colombia

**Dubai**

971 555 528 390  
Al Quoz 1  
Dubai, UAE

**International**

+34 915 345 064  
C/ Marzo 61-67  
28022 Madrid

[gesab.com](https://gesab.com)

[info@gesab.com](mailto:info@gesab.com)