

Material for upholstery and cushions

Rivestimenti per imbottiture e cuscini

	CARD	FABRIC	FIRE RETARDANT FABRIC	OUTDOOR FABRIC	GENUINE HARD LEATHER	REGENERATED HARD LEATHER	LEATHER	SIMIL LEATHER	FIRE RETARDANT SIMIL LEATHER	VELVET	FIRE RETARDANT VELVET
Category A	11	●	●	●	●	●	●	●	●	●	●
Category C	04, 05, 06, 07, 10	●	●	●	●	●	●	●	●	●	●
Category D	05, 07	●	●	●	●	●	●	●	●	●	●
Category D	08, 09	●	●	●	●	●	●	●	●	●	●
Category E	14	●	●	●	●	●	●	●	●	●	●
Category F	13	●	●	●	●	●	●	●	●	●	●
Category G	01, 02, 03, 04, 05, 06, 14	●	●	●	●	●	●	●	●	●	●
Category H	06, 07, 11, 14	●	●	●	●	●	●	●	●	●	●
Category N	03, 07, 14	●	●	●	●	●	●	●	●	●	●
Category N	08	●	●	●	●	●	●	●	●	●	●
Category P	12	●	●	●	●	●	●	●	●	●	●

Legend

Legenda



Fire-retardant
Ignifugo



Outdoor use
Adatto per uso esterno

washing / lavaggio



Do not wash
Lavaggio a secco



Hand wash
Lavaggio a mano



Wash at max 30°C normal
Lavaggio normale, max 30°C



Wash at max 30°C mild
Lavaggio delicato, max 30°C



Wash at max 40°C normal
Lavaggio normale, max 40°C



Wash at max 60°C mild
Lavaggio delicato, max 60°C

dry cleaning / lavaggio a secco



Do not dry clean
Lavaggio a secco non consentito



Dry clean, perchlorethylene (PCE)
Lavaggio a secco con percloroetilene (PCE)



Gentle dry cleaning with PCE
Lavaggio a secco delicato con PCE

drying / asciugatura



Tumble dry at low temperature
Asciugatrice a bassa temperatura



Do not tumble dry
Non asciugare in asciugatrice



Dry flat
Asciugare disteso



Do not wring
Non strizzare

ironing / stiratura



Do not iron
Non stirare



Iron at low temperature
Stirare a bassa temperatura



Iron at medium temperature
Stirare a media temperatura

bleaching / candeggio



Do not bleach
Non candeggiare



Any bleaching agent allowed
Candeggio consentito



Compliant to Ecolabel UE environmental requirements
Conforme ai requisiti ambientali Ecolabel UE



Product certified for low chemical emissions:
Prodotto certificato per basse emissioni di sostanze chimiche:
UL.COM/GG
UL 2818



96/98/CE - 2010/68/UE EU marine equipment rules compliant
Conforme ai requisiti europei per equipaggiamenti marittimi

Fabrics

Tessuti

Category G

PEDRALI

G

G59÷G69 | G190÷G197

G70÷G78

COMPOSITION COMPOSIZIONE	90% New wool 10% Nylon	90% New wool 10% Nylon
WEIGHT GRAMMATURA	550 g/m ² (16.22 oz/yd ²)	590 g/m ² (17.37 oz/yd ²)
ABRASION ABRASIONE	100.000 cycles Martindale (EN ISO 12947)	100.000 cycles Martindale (EN ISO 12947)
RUBBING FASTNESS SOLIDITÀ ALLO SFREGAMENTO	Dry and Wet 4-5, scale 1-5 (ISO 105-X12)	Dry 4 and Wet 3-4, scale 1-5 (ISO 105-X12)
PILLING	4, scale 1-5 (EN ISO 12945)	3-4, scale 1-5 (EN ISO 12945)
LIGHT FASTNESS SOLIDITÀ ALLA LUCE	6-7, scale 1-8 (ISO 105-B02)	6, scale 1-8 (ISO 105-B02)
SOUND ABSORPTION ASSORBIMENTO ACUSTICO	folded: $\alpha_w = 0.95$ Class A (EN ISO 354)	folded: $\alpha_w = 0.80$ Class B (EN ISO 354)
FLAME RESISTANCE RESISTENZA AL FUOCO	AS/NZS 1530.3 AS/NZS 3837 Class 2 ASTM E84 Class B Adhered ASTM E84 Class B Unadhered BS 5852 Part 1 BS 5852 Crib 5 with treatment EN 1021 – 1/2 IMO FTP Code 2010: Part 8 NF D60-013 NFPA 260 ÖNORM B1/Q1 SN 198 898 5.3 with treatment UNI 9175 Classe 1 IM US CA TB 117-2013 - Compliant to the criteria certifying the absence of flame retardant chemicals (AB 2998)	AS/NZS 1530.3 AS/NZS 3837 Class 2 ASTM E84 Class B Adhered ASTM E84 Class A Unadhered BS 5852 Part 1 BS 5852 Crib 5 with treatment EN 1021 – 1/2 EN 13501, B-s2, d1, with treatment IMO FTP Code 2010: Part 8 NF D60-013 NFPA 260 ÖNORM B1/Q1 SN 198 898 5.3 with treatment UNI 9175 Classe 1 IM US CA TB 117-2013 - Compliant to the criteria certifying the absence of flame retardant chemicals (AB 2998)
APPROVED OMOLOGATO	   <p>PRODUCT CERTIFIED FOR LOW CHEMICAL EMISSIONS: UL.COM/GG UL 2918 170166-420</p>	
CLEANING LAVAGGIO		



G

Collection / Collezione

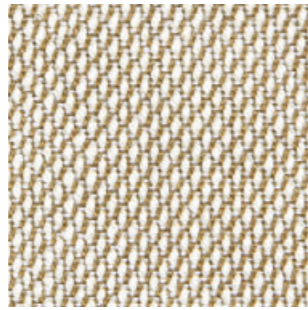
• kvadrat

STEELCUT TRIO
from G59 to G69
from G190 to G197

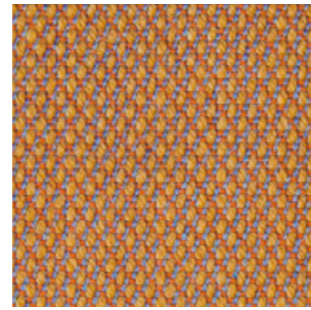
STEELCUT
from G70 to G78

DESIGNERS Dijkmeijer & Ridolfo

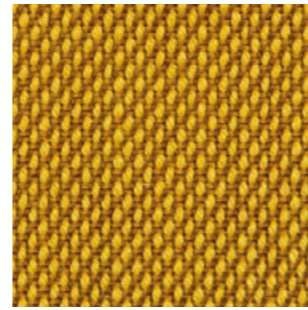
G 66



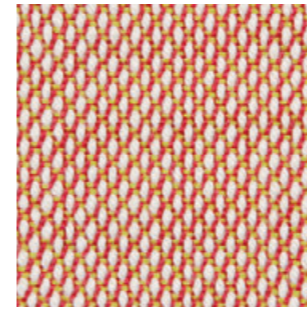
G 190



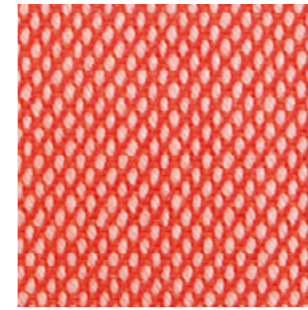
G 67



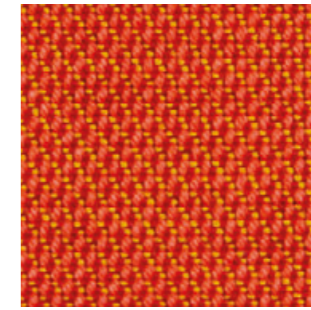
G 59



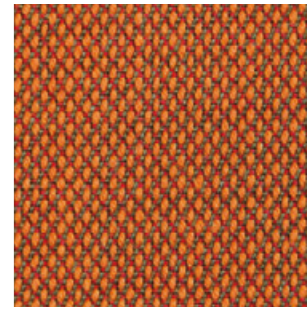
G192



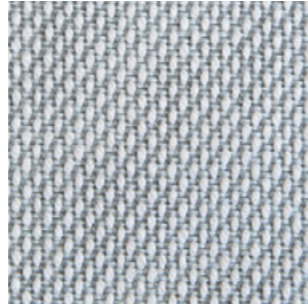
G 69



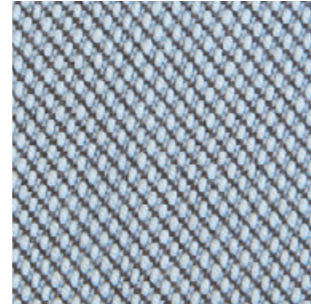
G 191



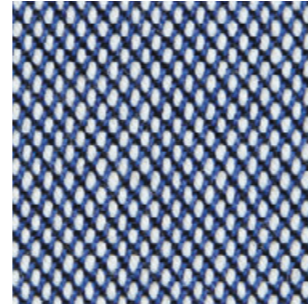
G 193



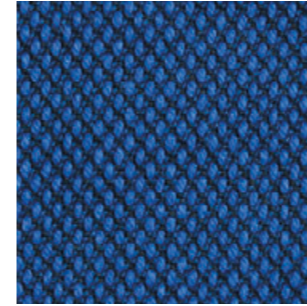
G 195



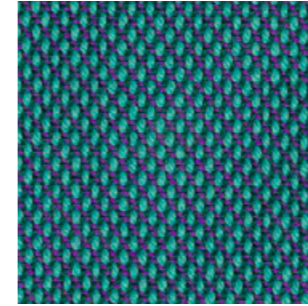
G 196



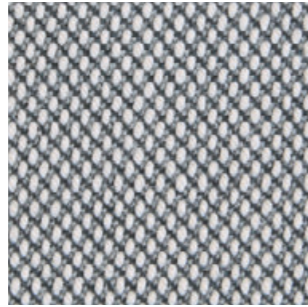
G 197



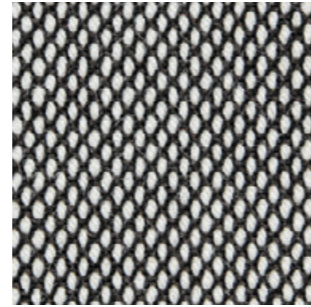
G 68



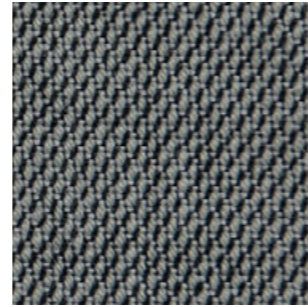
G 194



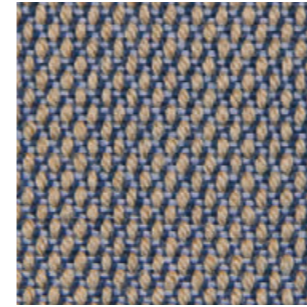
G 63



G 62



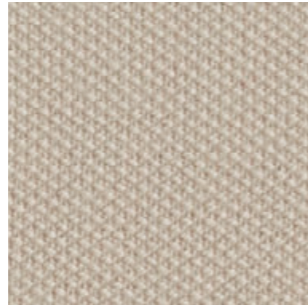
G 64



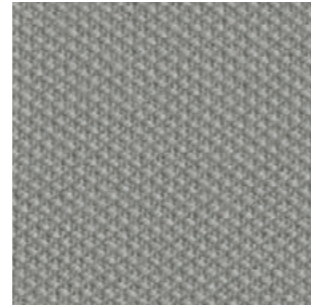
G 65



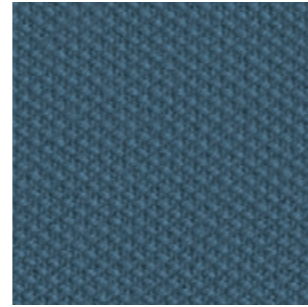
G 71



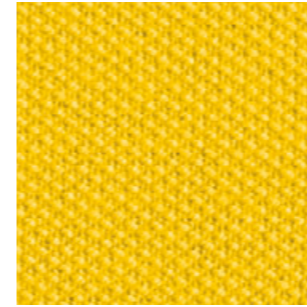
G 73



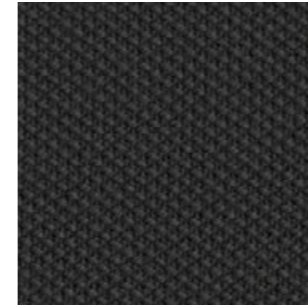
G 75



G 78



G 70





Fabrics

Tessuti

Category G

PEDRALI

G

	G159÷G169	G250÷G258	G21÷G24 G111÷G116
COMPOSITION COMPOSIZIONE	97% New wool 3% Recycled nylon	97% New wool 3% Recycled nylon	100% New wool
WEIGHT GRAMMATURA	415 g/m ² (12.21 oz/yd ²)	400 g/m ² (11.80 oz/yd ²)	560 g/m ² (16.52 oz/yd ²)
ABRASION ABRASIONE	45.000 cycles Martindale (EN ISO 12947)	45.000 cycles Martindale (EN ISO 12947)	45.000 cycles Martindale (EN ISO 12947)
RUBBING FASTNESS SOLIDITÀ ALLO SFREGAMENTO	Dry and Wet 4-5, scale 1-5 (ISO 105-X12)	Dry and Wet 4-5, scale 1-5 (ISO 105-X12)	G21+G24: Dry 5 and Wet 3-4, scale 1-5 (ISO 105-X12) G111+G116: Dry and Wet 4-5, scale 1-5 (ISO 105-X12)
PILLING	3-4, scale 1-5 (EN ISO 12945)	3-4, scale 1-5 (EN ISO 12945)	3, scale 1-5 (EN ISO 12945)
LIGHT FASTNESS SOLIDITÀ ALLA LUCE	6, scale 1-8 (ISO 105-B02)	6, scale 1-8 (ISO 105-B02)	G21+G24: 6-7, scale 1-8 (ISO 105-B02) G111+G116: 5-6, scale 1-8 (ISO 105-B02)
SOUND ABSORPTION ASSORBIMENTO ACUSTICO	folded: α_w = 0.80 Class B (EN ISO 354)	folded: α_w = 0.80 Class B (EN ISO 354)	folded: α_w = 0.70 Class C (EN ISO 354)
FLAME RESISTANCE RESISTENZA AL FUOCO	AS/NZS 3837 Class 2 ASTM E84 Class A Adhered ASTM E84 Class A Unadhered BS 5852 Part 1 BS 5852 Crib 5 with treatment EN 1021 - 1/2 EN 13773 Class 1 with treatment IMO FTP Code 2010: Part 8 NF D60-013 NFPA 701 with treatment SN 198 898 5.3 with treatment UNI 9175 Classe 1 IM US CA TB 117-2013 - Compliant to the criteria certifying the absence of flame retardant chemicals (AB 2998)	AS/NZS 3837 Class 1 ASTM E84 Class A Adhered ASTM E84 Class A Unadhered BS 5852 Part 1 BS 5852 Crib 5 with treatment EN 1021 - 1/2 EN 13773 Class 1 with treatment IMO FTP Code 2010: Part 8 NF D60-013 NFPA 701 with treatment ÖNORM B1/Q1 SN 198 898 5.3 with treatment UNI 9175 Classe 1 IM US CA TB 117-2013 - Compliant to the criteria certifying the absence of flame retardant chemicals (AB 2998)	AS/NZS 1530.3 ASTM E84 Class A Adhered ASTM E84 Class A Unadhered with treatment ASTM E84 Class B Unadhered BS 5852 Part 1 BS 5852 Crib 5 with treatment BS 5867 Part 2 type B EN 1021 - 1/2 EN 13501, B-s2, d0, with treatment IMO FTP Code 2010: Part 8 NF D60-013 NFPA 260 NFPA 701 with treatment ÖNORM B1/Q1 JIS L 1091 A-1 D CAN ULC S109 with treatment SN 198 898 5.3 with treatment UNI 9175 Classe 1 IM US CA TB 117-2013 - Compliant to the criteria certifying the absence of flame retardant chemicals (AB 2998)
APPROVED OMOLOGATO	   		
CLEANING LAVAGGIO			

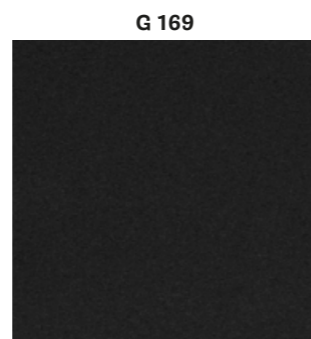


Collection / Collezione

• **kvadrat**

HERO
from G159 to G169

DESIGNER Patricia Urquiola

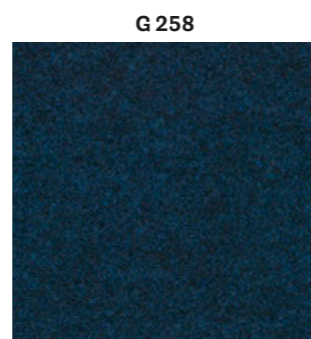
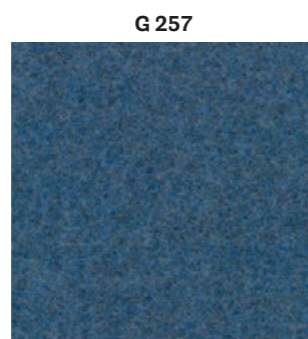
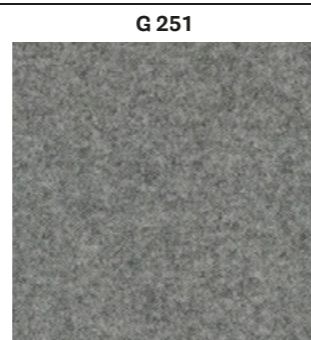


Collection / Collezione

• **kvadrat**

HERO HEATHER
from G250 to G258

DESIGNER Patricia Urquiola



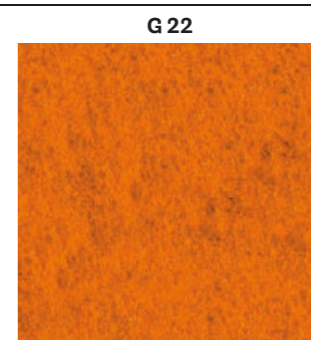
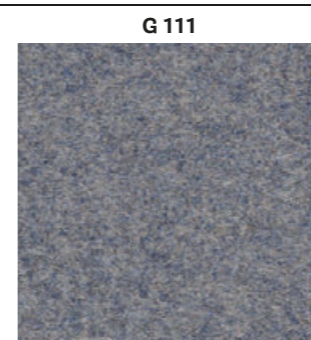
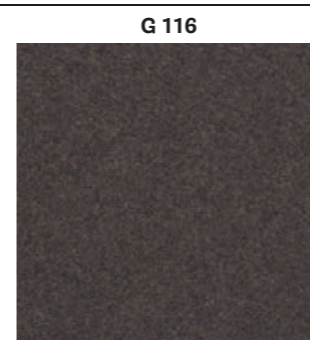
Collection / Collezione

• **kvadrat**

DIVINA MELANGE
from G21 to G24

DIVINA MD
from G111 to G116

DESIGNER Finn Sködt



Fabrics


Tessuti

Category G | N

PEDRALI

G 

N 

	G100÷G102	G120÷G122	G220÷G225	G240÷G244	N01÷N08
COMPOSITION COMPOSIZIONE	90% New wool 10% Nylon	100% New wool	52% Cotton 22% Viscose 14% Polyacrylic 6% Linen 3% Polyester 3% Nylon	43% Viscose 17% Polyacrylic 15% New wool 9% Cotton 8% Polyester 8% Linen	58% New wool 25% Viscose 8% Linen 5% Nylon 4% Polyester
WEIGHT GRAMMATURA	365 g/m ² (10.76 oz/yd ²)	493 g/m ² (14.54 oz/yd ²)	745 g/m ² (21.97 oz/yd ²)	720 g/m ² (21.23 oz/yd ²)	420 g/m ² (12.39 oz/yd ²)
ABRASION ABRASIONE	50.000 cycles Martindale (EN ISO 12947)	75.000 cycles Martindale (EN ISO 12947)	50.000 cycles Martindale (EN ISO 12947)	40.000 cycles Martindale (EN ISO 12947)	50.000 cycles Martindale (EN ISO 12947)
PILLING	4, scale 1-5 (EN ISO 12945)	3-4, scale 1-5 (EN ISO 12945)	4-5, scale 1-5 (EN ISO 12945)	3, scale 1-5 (EN ISO 12945)	3, scale 1-5 (EN ISO 12945)
LIGHT FASTNESS SOLIDITÀ ALLA LUCE	6-7, scale 1-8 (ISO 105-B02)	6-7, scale 1-8 (ISO 105-B02)	6, scale 1-8 (ISO 105-B02)	5-6, scale 1-8 (ISO 105-B02)	5, scale 1-8 (ISO 105-B02)
RUBBING FASTNESS SOLIDITÀ ALLO SFREGAMENTO	Dry and Wet 5, scale 1-5 (ISO 105-X12)	Dry 5 and Wet 4-5, scale 1-5 (ISO 105-X12)	Dry and Wet 4-5, scale 1-5 (ISO 105-X12)	Dry and Wet 4-5, scale 1-5 (ISO 105-X12)	Dry 4-5 and Wet 3-4, scale 1-5 (ISO 105-X12)
FLAME RESISTANCE RESISTENZA AL FUOCO	AS/NZS 3837 Class 2 BS 5852 Part 1 BS 5852 Crib 5 with treatment EN 1021 - 1/2 IMO FTP Code 2010: Part 8 NFPA 260 NF D60-013 ÖNORM B1/Q1 SN 198 898 5.3 with treatment UNI 9175 Classe 1 IM US CA TB 117-2013 - Compliant to the criteria certifying the absence of flame retardant chemicals (AB 2998)	AS/NZS 3837 Class 2 ASTM E84 Class A Adhered ASTM E84 Class B Unadhered BS 5852 Part 1 BS 5852 Crib 5 with treatment EN 1021 - 1/2 IMO FTP Code 2010: Part 8 NFPA 260 NF D60-013 ÖNORM B1/Q1 SN 198 898 5.3 with treatment UNI 9175 Classe 1 IM US CA TB 117-2013 - Compliant to the criteria certifying the absence of flame retardant chemicals (AB 2998)	AS/NZS 3837 Class 2 BS 5852 Part 1 BS 5852 Crib 5 with treatment EN 1021 - 1/2 IMO FTP Code 2010: Part 8 US CA TB 117-2013 - Compliant to the criteria certifying the absence of flame retardant chemicals (AB 2998)	AS/NZS 3837 Class 2 BS 5852 Part 1 BS 5852 Crib 5 with treatment EN 1021 - 1/2 IMO FTP Code 2010: Part 8 US CA TB 117-2013 - Compliant to the criteria certifying the absence of flame retardant chemicals (AB 2998)	AS/NZS 3837 Class 2 BS 5852 Crib 5 with treatment EN 1021 - 1/2 EN 13501, C-s1, d0, with treatment IMO FTP Code 2010: Part 8 with treatment NFPA 260 US CA TB 117-2013 - Compliant to the criteria certifying the absence of flame retardant chemicals (AB 2998)
APPROVED OMOLOGATO	   <small>PRODUCT CERTIFIED FOR LOW CHEMICAL EMISSIONS: UL COMFGG UL 2818 170166-420</small>		  <small>PRODUCT CERTIFIED FOR LOW CHEMICAL EMISSIONS: UL COMFGG UL 2818 170166-420</small>		
CLEANING LAVAGGIO					



G

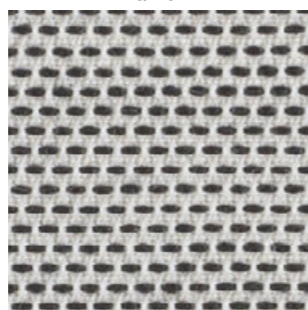
Collection / Collezione

• **kvadrat**

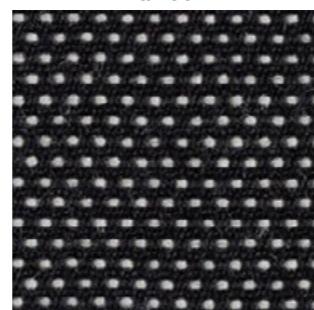
BASEL
from G100 to G102

DESIGNERS Herzog & de Meuron

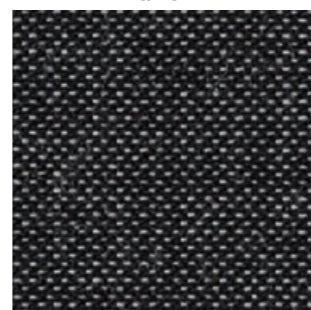
G 101



G 100



G 102



G 120



G 121



G 122



Collection / Collezione

• **kvadrat**

MOLLY
from G120 to G122

DESIGNER Åsa Pärson

G 225



G 220



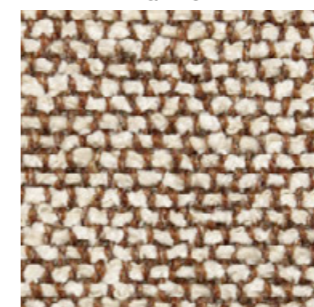
G 221



G 222



G 223



G 224



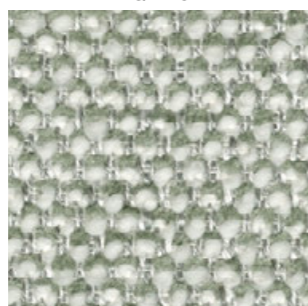
Collection / Collezione

• **kvadrat-SAHCC**

MOSS
from G220 to G225

DESIGNER Vincent Van Duysen

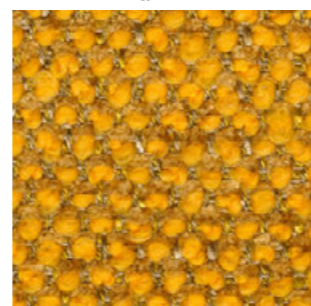
G 240



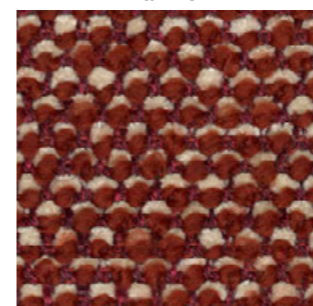
G 241



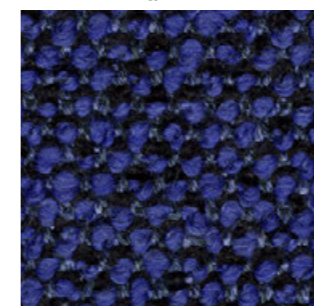
G 242



G 243



G 244



Collection / Collezione

• **kvadrat-SAHCC**

SAFIRE
from G240 to G244



N

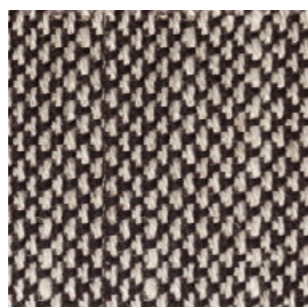
Collection / Collezione

• **kvadrat**

SUNNIVA
from N01 to N08

DESIGNERS Raf Simons & Fanny Aronsen

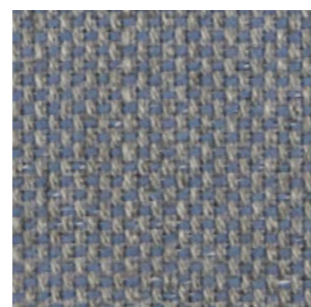
N 05



N 01



N 08



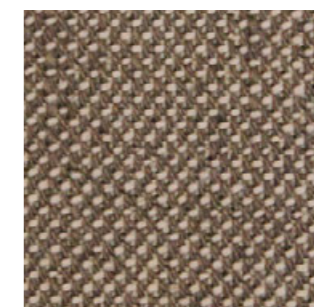
N 02



N 06



N 07








Fabrics

Tessuti

Category C | G

PEDRALI

FABRICS / TESSUTI

	C 	G 	
	C110÷C122	G150÷G156	G130÷G133
COMPOSITION COMPOSIZIONE	85% Wool 15% Polyamide	82% Wool 12% Rami 6% Polyamide	95% Virgin Wool 5% Polyamide
WEIGHT GRAMMATURA	330 g/m ² (9.73 oz/yd ²)	570 g/m ² (16.81 oz/yd ²)	660 g/m ² (19.47 oz/yd ²)
ABRASION ABRASIONE	100.000 cycles Martindale (EN ISO 12947-2)	100.000 cycles Martindale (EN ISO 12947-2)	52.000 cycles Martindale (EN ISO 12947-2)
RUBBING FASTNESS SOLIDITÀ ALLO SFREGAMENTO	Dry 4 and Wet 3-4, scale 1-5 (ISO 105-X12)	Dry 4 and Wet 3-4, scale 1-5 (ISO 105-X12)	/
PILLING	/	/	4-5, scale 1-5 (EN ISO 12945-2)
LIGHT FASTNESS SOLIDITÀ ALLA LUCE	5-7, scale 1-8 (ISO 105-B02)	5-7, scale 1-8 (ISO 105-B02)	5-8, scale 1-8 (ISO 105-B02)
SOUND ABSORPTION ASSORBIMENTO ACUSTICO	/	/	folded: $\alpha_w = 0.85$ Class B (ISO 11654)
FLAME RESISTANCE RESISTENZA AL FUOCO	BS 5852 Crib 5 EN 1021 - 1/2 IMO FTP Code 2010: Part 8 UNI 9175 Classe 1 IM US CA TB 117-2013 - Compliant to the criteria certifying the absence of flame retardant chemicals (AB 2998)	BS 5852 Crib 5 EN 1021 - 1/2 IMO FTP Code 2010: Part 8 UNI 9175 Classe 1 IM US CA TB 117-2013 - Compliant to the criteria certifying the absence of flame retardant chemicals (AB 2998)	BS 5852 Part 1 BS 5852 Crib 5 DIN 4102-1 B2 EN 1021 - 1/2 EN 13501-1 FAR 25.853 (12 sec. vertical) IMO: 2014/90/EU (MED) UNI 9175 Classe 1 IM US CA TB 117-2013 - Compliant to the criteria certifying the absence of flame retardant chemicals (AB 2998)
APPROVED OMOLOGATO	 		
CLEANING LAVAGGIO	    	    	  



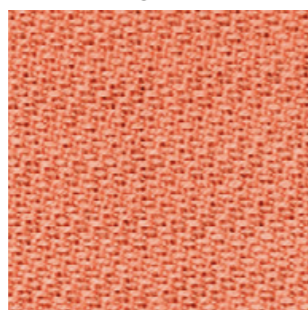
C

Collection / Collezione

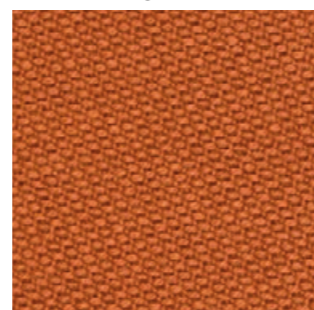
• **svensson**

SEMI
from C110 to C122

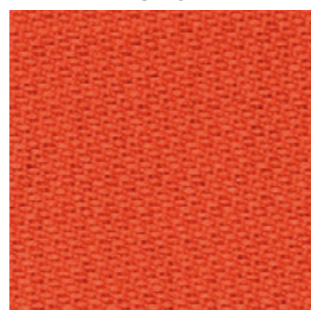
C111



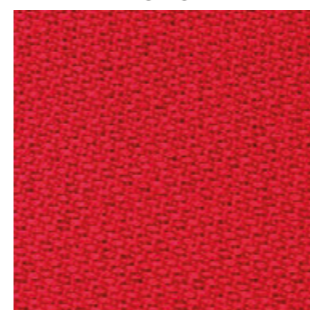
C112



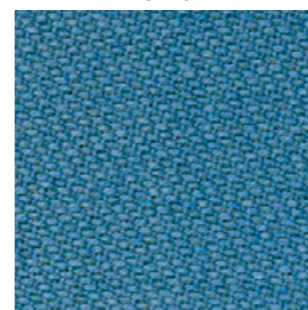
C110



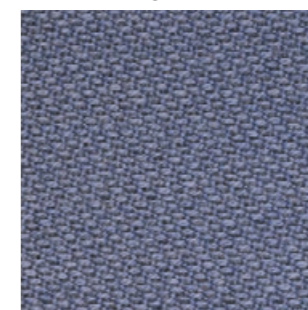
C113



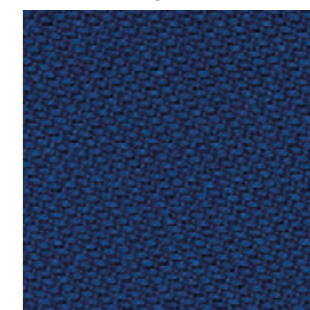
C120



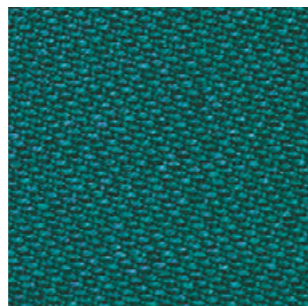
C121



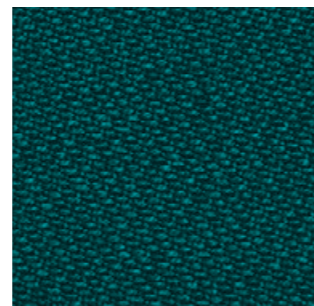
C122



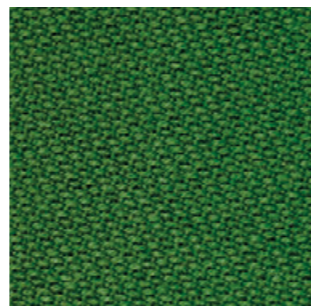
C118



C119



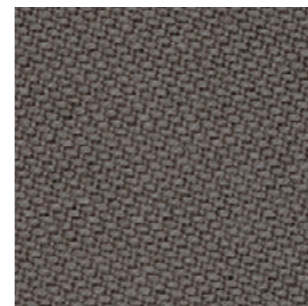
C117



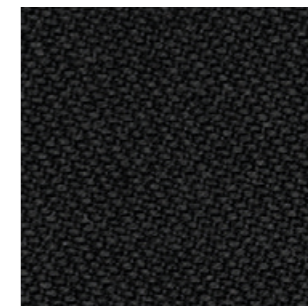
C114



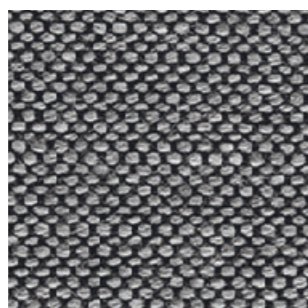
C115



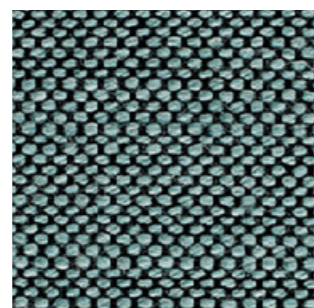
C116



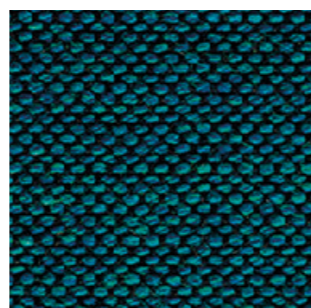
G 151



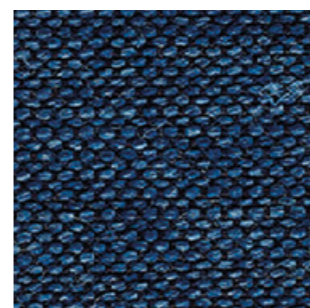
G 154



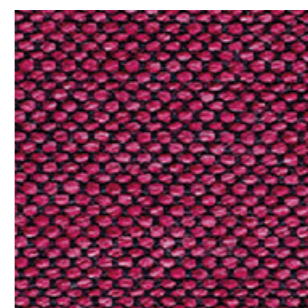
G 155



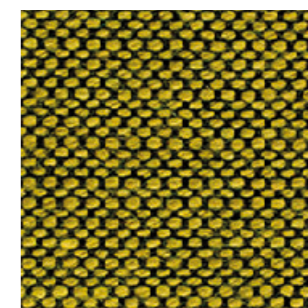
G 156



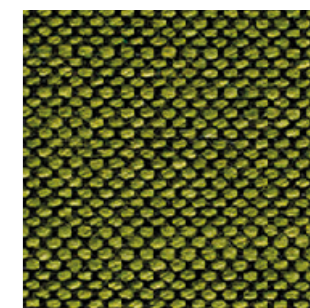
G 150



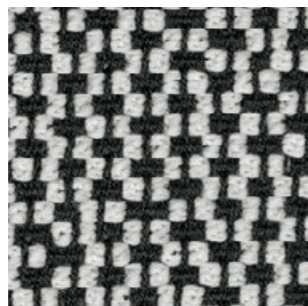
G 152



G 153



G 130



G 133



G 132



G 131



G

Collection / Collezione

• **svensson**

BALANCE
from G150 to G156

Fabrics

Tessuti

Category C | D | G

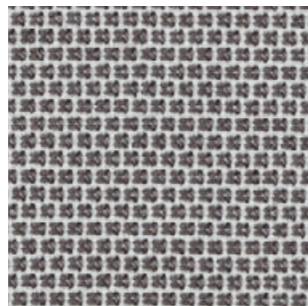
PEDRALI

	C 	D 	G 
	C83÷C89 C100, C101	D40÷D44	G170÷G176 G210÷G213
COMPOSITION COMPOSIZIONE	54% New Zealand Wool 44% Post-consumer recycled polyester 2% Polyamide	88% New Zealand Wool 12% Polyamide	96% Virgin Wool 4% Polyamide
WEIGHT GRAMMATURA	307 g/m ² (9.05 oz/yd ²)	420 g/m ² (12.39 oz/yd ²)	660 g/m ² (19.47 oz/yd ²)
ABRASION ABRASIONE	100.000 cycles Martindale (EN ISO 12947-2)	100.000 cycles Martindale (EN ISO 12947-2)	90.000 cycles Martindale (EN ISO 12947-2)
RUBBING FASTNESS SOLIDITÀ ALLO SFREGAMENTO	Dry and Wet 4-5, scale 1-5 (ISO 105-X12)	Dry and Wet 4-5, scale 1-5 (ISO 105-X12)	/
PILLING	4-5, scale 1-5 (EN ISO 12945-2)	4-5, scale 1-5 (EN ISO 12945-2)	4-5, scale 1-5 (EN ISO 12945-2)
LIGHT FASTNESS SOLIDITÀ ALLA LUCE	5-7, scale 1-8 (ISO 105-B02)	5-7, scale 1-8 (ISO 105-B02)	5, scale 1-8 (ISO 105-B02)
SOUND ABSORPTION ASSORBIMENTO ACUSTICO	/	/	folded: $\alpha_w=0.95$ Class A (ISO 11654)
FLAME RESISTANCE RESISTENZA AL FUOCO	EN 1021 – 1/2 EN 1021-1 ÖNORM A3800-1 US CA TB 117-2013 - Compliant to the criteria certifying the absence of flame retardant chemicals (AB 2998)	ASTM E84 Class 2 EN 1021 – 1/2 BS 5852 Part 1 0, 1 NF D60-013 UNI 9175 Classe 1 IM US CA TB 117-2013 - Compliant to the criteria certifying the absence of flame retardant chemicals (AB 2998)	BS 5852 Part 1 BS 5852 Crib 5 with treatment DIN 4102-1 B2 with treatment EN 13501-1 with treatment EN 1021 – 1/2 FAR 25.853 (12 sec. vertical) with treatment IMO: 2014/90/EU (MED) UNI 9175 Classe 1 IM US CA TB 117-2013 - Compliant to the criteria certifying the absence of flame retardant chemicals (AB 2998)
APPROVED OMOLOGATO			
CLEANING LAVAGGIO			

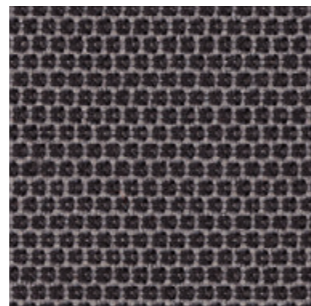


C

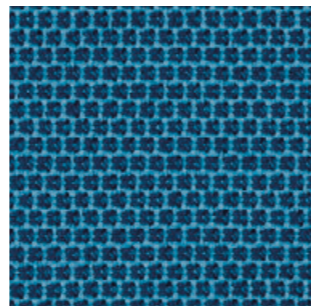
C 101



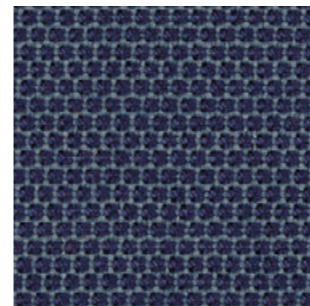
C 86



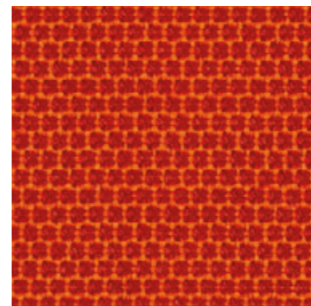
C 83



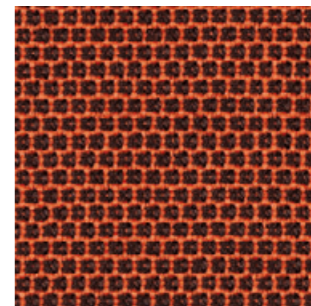
C 100



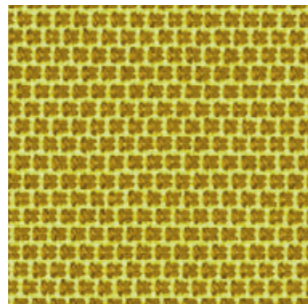
C 85



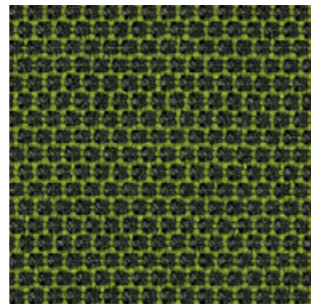
C 89



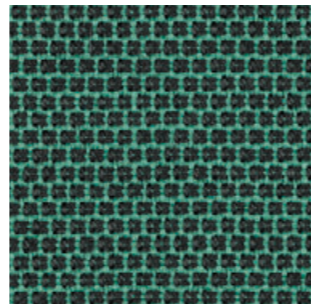
C 87



C 84

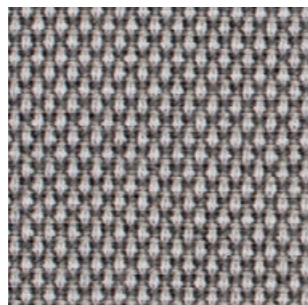


C 88

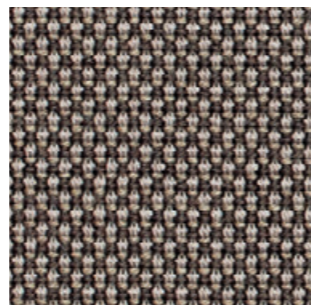


D

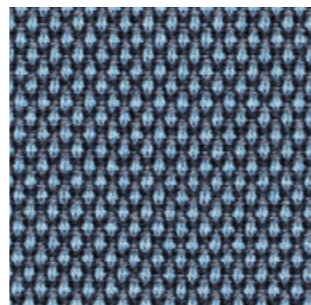
D 40



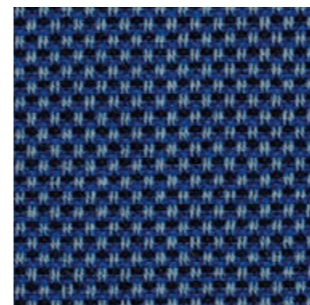
D 41



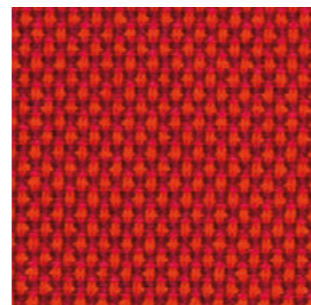
D 43



D 44

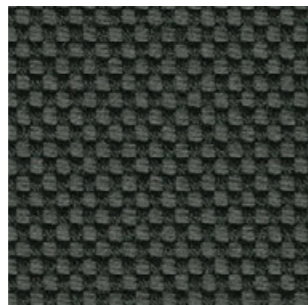


D 42



G

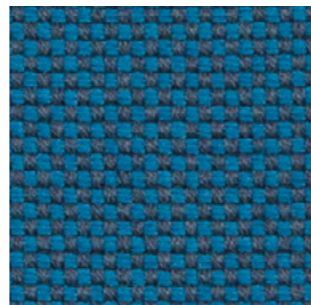
G 175



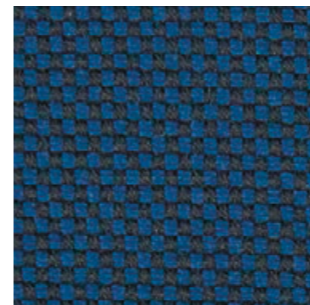
G 176



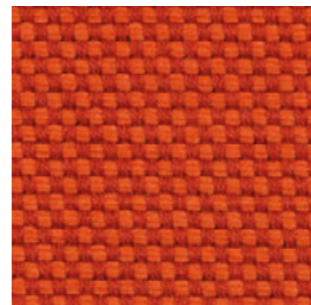
G 173



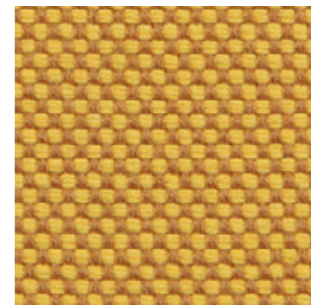
G 174



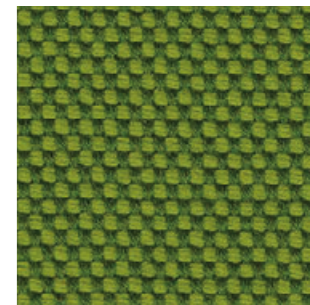
G 170



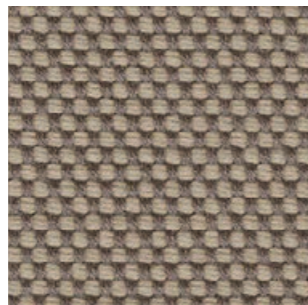
G 171



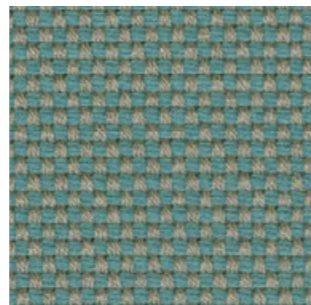
G 172



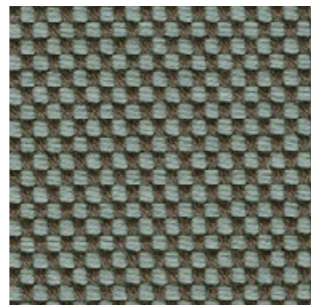
G 211



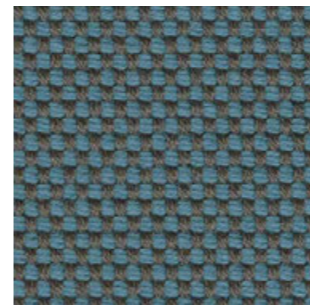
G 210



G 213



G 212



Fabrics

Tessuti

Category G | H | C

PEDRALI

G 

H 

C 

G200÷G206

G140÷G146

H120÷H127

C210÷C217

	G200÷G206	G140÷G146	H120÷H127	C210÷C217
COMPOSITION COMPOSIZIONE	92% New wool 8% Nylon	45% Recycled wool 45% New wool 10% Nylon	90% New Wool 10% Nylon	100% TREVIRA CS®
WEIGHT GRAMMATURA	370 g/m ² (10.91 oz/yd ²)	385 g/m ² (11.35 oz/yd ²)	300 g/m ² (8.85 oz/yd ²)	320 g/m ² (9.47 oz/yd ²)
ABRASION ABRASIONE	80.000 cycles Martindale (EN ISO 12947)	100.000 cycles Martindale (EN ISO 12947)	100.000 cycles Martindale (EN ISO 12947)	80.000 cycles Martindale (EN ISO 12947)
RUBBING FASTNESS SOLIDITÀ ALLO SFREGAMENTO	Dry and Wet 5, scale 1-5 (ISO 105-X12)	Dry 4-5 and Wet 4, scale 1-5 (ISO 105-X12)	Dry and Wet 4, scale 1-5 (ISO 105-X12)	Dry and Wet 5, scale 1-5 (ISO 105-X12)
PILLING	4, scale 1-5 (EN ISO 12945)	4, scale 1-5 (EN ISO 12945)	4, scale 1-5 (EN ISO 12945)	4-5, scale 1-5 (EN ISO 12945)
LIGHT FASTNESS SOLIDITÀ ALLA LUCE	6-7, scale 1-8 (ISO 105-B02)	6, scale 1-8 (ISO 105-B02)	6, scale 1-8 (ISO 105-B02)	6-7, scale 1-8 (ISO 105-B02)
SOUND ABSORPTION ASSORBIMENTO ACUSTICO	/	folded: $\alpha_w = 0.75$ Class C (EN ISO 354)	folded: $\alpha_w = 0.80$ Class B (EN ISO 354)	folded: $\alpha_w = 0.70$ Class C (EN ISO 354)
FLAME RESISTANCE RESISTENZA AL FUOCO	AS/NZS 1530.3 AS/NZS 3837 Class 2 BS 5852 Part 1 BS 5852 Crib 5 with treatment EN 1021 - 1/2 IMO FTP Code 2010: Part 8 NF D60-013 SN 198 898 5.3 with treatment UNI 9175 Classe 1 IM US CA TB 117-2013 - Compliant to the criteria certifying the absence of flame retardant chemicals (AB 2998)	AS/NZS 1530.3 AS/NZS 3837 Class 2 BS 5852 Part 1 BS 5852 Crib 5 with treatment EN 1021 - 1/2 EN 13501, B-s2, d0, with treatment IMO FTP Code 2010: Part 8 NF D60-013 SN 198 898 5.3 with treatment ÖNORM B1/Q1 UNI 9175 Classe 1 IM US CA TB 117-2013 - Compliant to the criteria certifying the absence of flame retardant chemicals (AB 2998)	AS/NZS 1530.3 AS/NZS 3837 Class 2 ASTM E84 Class A Adhered ASTM E84 Class A Unadhered BS 5852 Part 1 BS 5852 Crib 5 with treatment EN 1021 - 1/2 EN 13501, B-s2, d0, with treatment GB 50222 B1 with treatment IMO FTP Code 2010: Part 7 with treatment IMO FTP Code 2010: Part 8 NF D60-013 NFPA 260 ÖNORM B1/Q1 SN 198 898 5.3 with treatment UNI 9175 Classe 1 IM US CA TB 117-2013 - Compliant to the criteria certifying the absence of flame retardant chemicals (AB 2998)	AS/NZS 3837 Class 2 ASTM E84 Class B Adhered ASTM E84 Class A Unadhered BS 5852 Crib 5 with treatment BS 5852 Part 1 with treatment BS 5867 Part 2 type B DIN 4102 B1 EN 1021 - 1/2 EN 13501-1, B-s1, d0 GB 8624 B1 FAR 25.853 IMO FTP Code 2010: Part 8 IMO FTP Code 2010: Part 5 NF D60-013 NF P92 507 M1 NFPA 701 ÖNORM B1/Q1 CAN ULC S102 S109 SN 198 898 5.2 UNI 9177 Classe 1 UNI 9175 Classe 1 IM US CA TB 117-2013

APPROVED
OMOLOGATO



CLEANING
LAVAGGIO





G

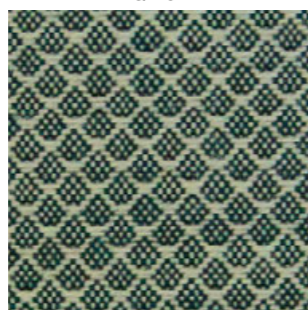
Collection / Collezione

• **kvadrat**

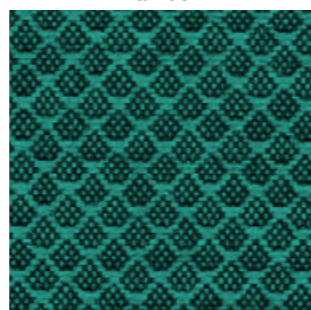
JAALI
from G200 to G206

DESIGNER Doshi Levien

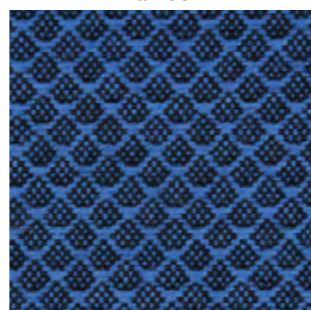
G 204



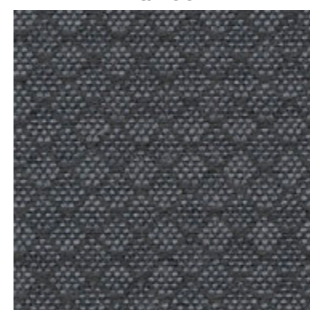
G 205



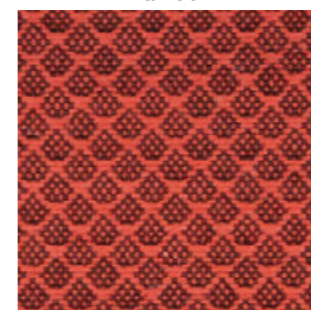
G 203



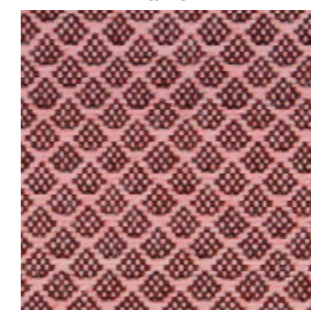
G 206



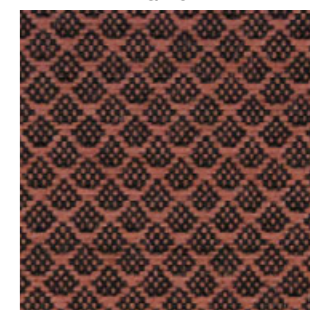
G 200



G 201



G 202



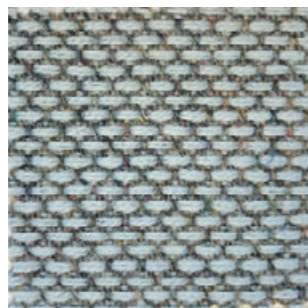
Collection / Collezione

• **kvadrat**

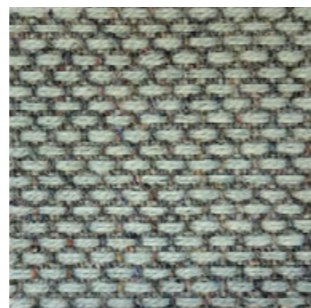
RE-WOOL
from G140 to G146

DESIGNER Margrethe Odgaard

G 143



G 145



G 144



G 146



G 140



G 141



G 142



H

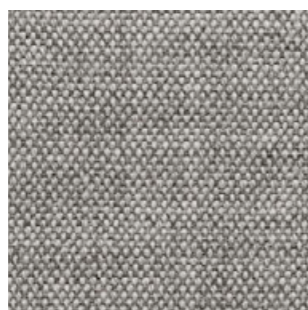
Collection / Collezione

• **kvadrat**

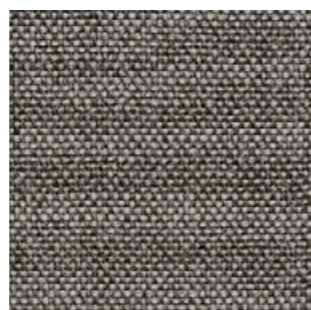
REMIX
from H120 to H127

DESIGNER Giulio Ridolfo

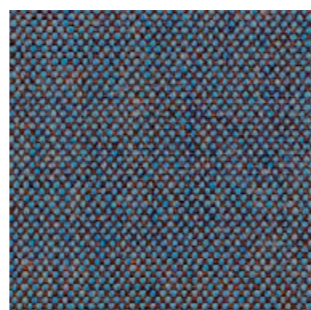
H 120



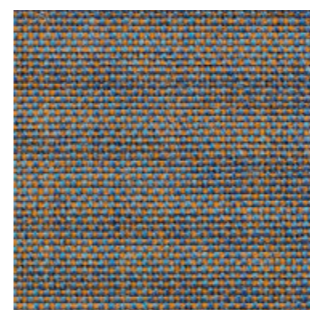
H 121



H 123



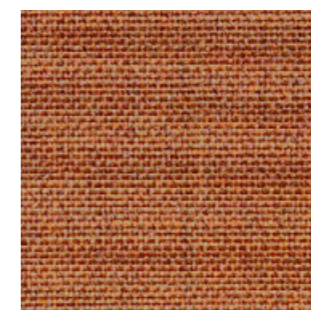
H 122



H 125



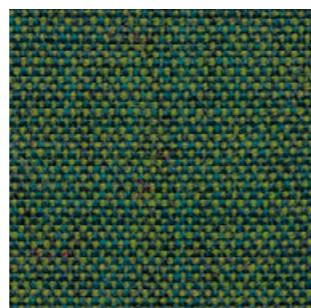
H 124



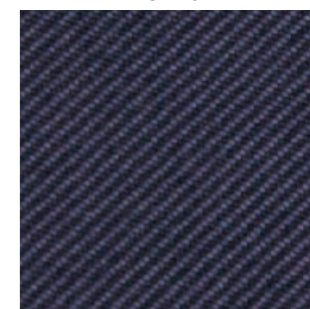
H 126



H 127



C 216



C

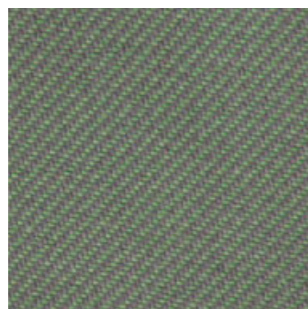
Collection / Collezione

• **kvadrat**

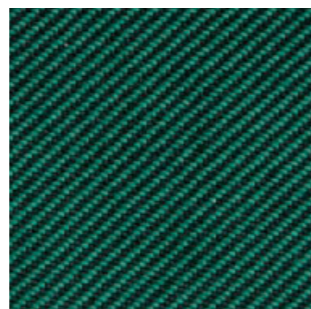
RELATE
from C210 to C217

DESIGNER Patricia Urquiola

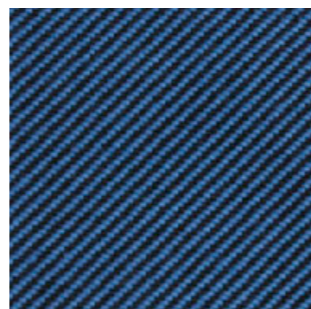
C 210



C 211



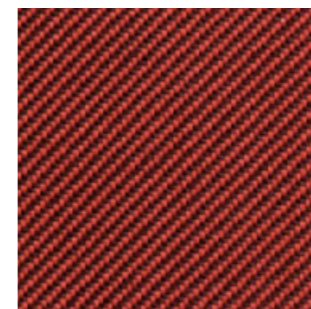
C 217



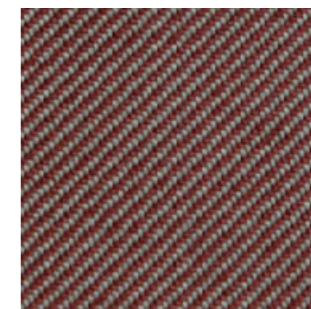
C 212



C 213



C 214



C 215



Fabrics

Tessuti

Category D | H | N | C

FABRICS / TESSUTI

	D	H	N 	C
	D120÷D123	H140÷H143	N30÷N38	C36÷C39
COMPOSITION COMPOSIZIONE	22% Acrylic 22% Virgin Wool 22% Polyester 14% Viscose 13% Cotton 7% Linen	35% Wool 35% Acrylic 23% Polyester 7% Cotton	65% Wool 32% Cotton 3% Polyamide	94% Cotton 6% Polyamide
WEIGHT GRAMMATURA	580 g/m ² (17.11 oz/yd ²)	414 g/m ² (12.21 oz/yd ²)	746 g/m ² (22.00 oz/yd ²)	480 g/m ² (14.16 oz/yd ²)
ABRASION ABRASIONE	30.000 cycles Martindale (EN ISO 12947-2)	40.000 cycles Martindale (EN ISO 12947-2)	80.000 cycles Martindale (EN ISO 12947-2)	40.000 cycles, Martindale (EN ISO 12947-2)
PILLING	4, scale 1-5 (EN ISO 12945-2 to 5.000 rubs)	3-4, scale 1-5 (EN ISO 12945-2 to 5.000 rubs)	4-5, scale 1-5 (EN ISO 12945 to 5.000 rubs)	4, scale 1-5 (EN ISO 12945-2 to 5.000 rubs)
RUBBING FASTNESS SOLIDITÀ ALLO SFREGAMENTO	Dry 4-5 and Wet 3, scale 1-5 (ISO 105-X12)	Dry 4-5 and Wet 3, scale 1-5 (ISO 105-X12)	Dry 4-5 and Wet 3-4, scale 1-5 (ISO 105-X12)	Dry 4-5 and Wet 2-3, scale 1-5 (ISO 105-X12)
LIGHT FASTNESS SOLIDITÀ ALLA LUCE	5-6, scale 1-8 (ISO 105-B02)	5-6, scale 1-8 (ISO 105-B02)	4-5, scale 1-8 (ISO 105-B02)	4-5, scale 1-8 (ISO 105-B02)
FLAME RESISTANCE RESISTENZA AL FUOCO	BS 5852 Part 1 US CA TB 117-2013 - Compliant to the criteria certifying the absence of flame retardant chemicals (AB 2998)	EN 1021-1 BS 5852 Part 1 US CA TB 117-2013 - Compliant to the criteria certifying the absence of flame retardant chemicals (AB 2998)	BS 5852 Part 1 BS 5852 Crib 5 EN 1021 - 1/2 UNI 9175 Classe 1 IM US CA TB 117-2013 - Compliant to the criteria certifying the absence of flame retardant chemicals (AB 2998)	/
CLEANING LAVAGGIO				

PEDRALI

D

D 120



D 121



D 122



D 123



H

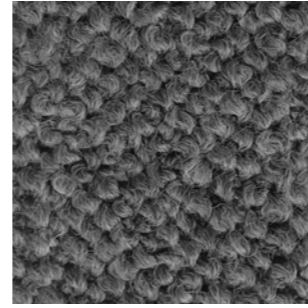
H 143



H 140



H 141



H 142



N

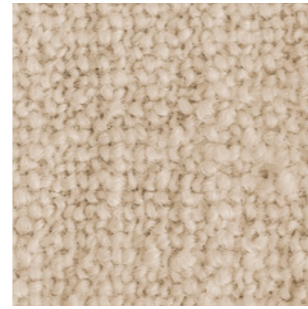
N 30



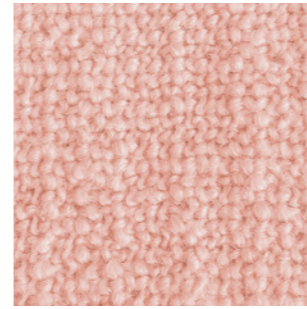
N 31



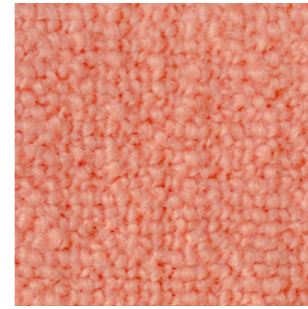
N 32



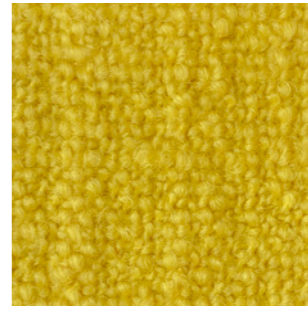
N 33



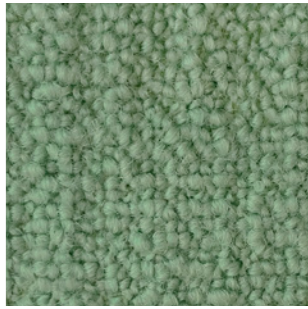
N 34



N 35



N 36

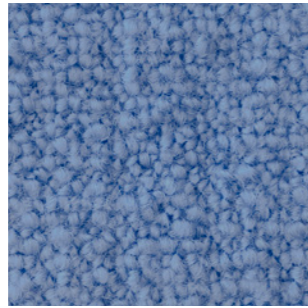


Collection / Collezione

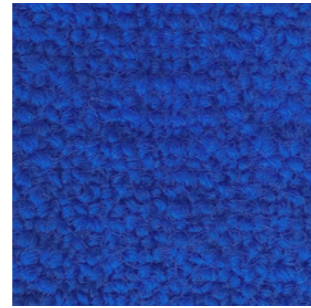
• DEDAR

A PERFECT FLOWER
from N30 to N38

N 37

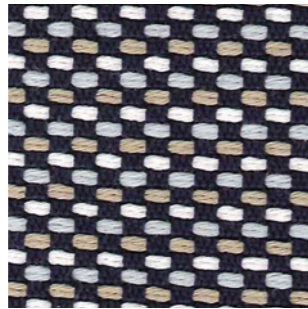


N 38

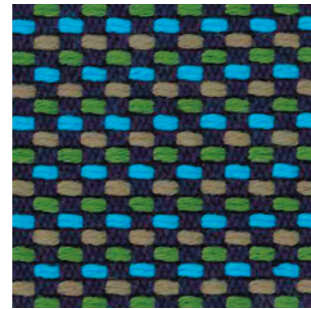


C

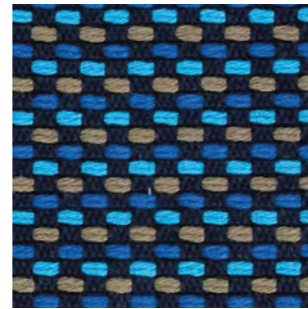
C 37



C 38



C 39



C 36



Fabrics

Tessuti





Category D | N 

PEDRALI

FABRICS / TESSUTI

D  only for outdoor collections cushions / solo per cuscini delle collezioni outdoor

N  only for outdoor accessory cushions / solo per cuscini accessori outdoor

	D80÷D89	D130÷D133	N40÷N45
COMPOSITION COMPOSIZIONE	100% Acrylic	100% Polypropylene	100% Acrylic
WEIGHT GRAMMATURA	290 g/m ² (8.55 oz/yd ²)	470 g/m ² (13.86 oz/yd ²)	380 g/m ² (11.21 oz/yd ²)
ABRASION ABRASIONE	> 20.000 cycles, Martindale (EN ISO 5470-2)	40.000 cycles, Martindale (EN ISO 12947-2)	24.000 cycles, Martindale (EN ISO 12947-2)
RUBBING FASTNESS SOLIDITÀ ALLO SFREGAMENTO	/	Dry 4-5 and Wet 4, scale 1-5 (ISO 105-X12)	Dry and Wet 4-5, scale 1-5 (ISO 105-X12)
PILLING	/	4-5, scale 1-5 (EN ISO 12945-2 to 5.000 rubs)	3-4, scale 1-5 (EN ISO 12945 to 5.000 rubs)
LIGHT FASTNESS SOLIDITÀ ALLA LUCE	8, scale 1-8 (ISO 105-B04)	7-8, scale 1-8 (ISO 105-B02)	6-7, scale 1-8 (ISO 105-B02)
WATER FASTNESS SOLIDITÀ ALL'ACQUA	8, scale 1-8 (ISO 105-B04)	7, scale 1-8 (ISO 105-B04)	/
FLAME RESISTANCE RESISTENZA AL FUOCO	/	BS 5852 Part 1 US CA TB 117-2013 - Compliant to the criteria certifying the absence of flame retardant chemicals (AB 2998)	US CA TB 117-2013
APPROVED OMOLOGATO		/	/
CLEANING LAVAGGIO			



D

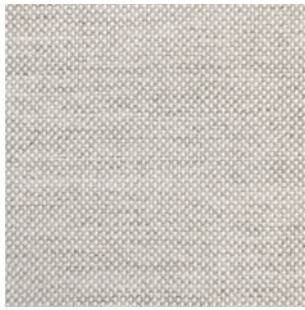
only for outdoor collections
cushions / solo per cuscini
delle collezioni outdoor

Collection / Collezione

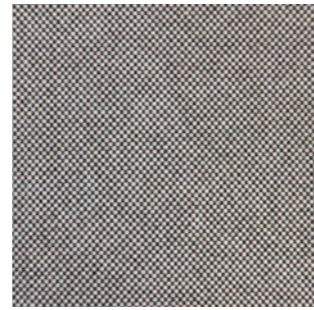
• **PEDRALI**

FLORIDA
from D80 to D89

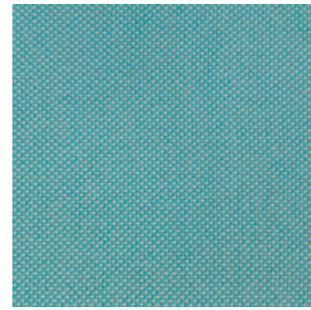
D 80



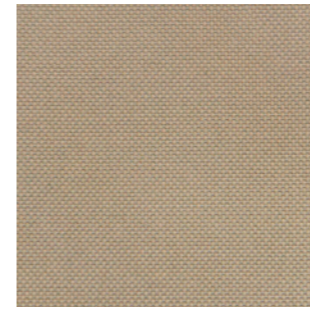
D 81



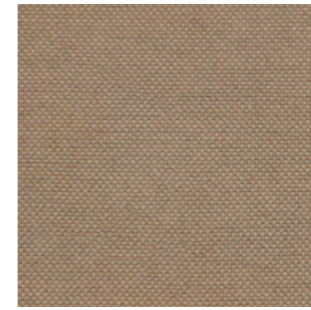
D 82



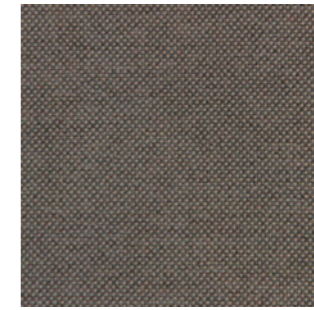
D 83



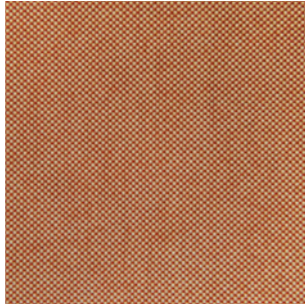
D 84



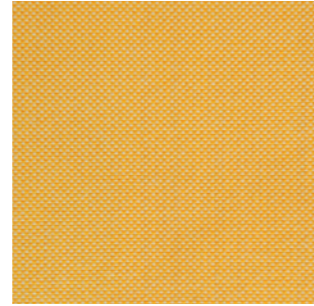
D 85



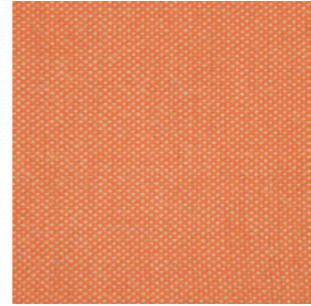
D 86



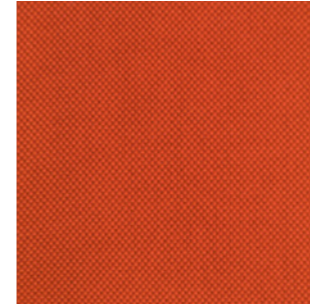
D 87



D 88



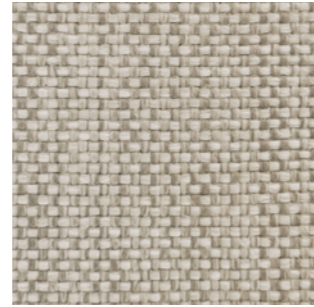
D 89



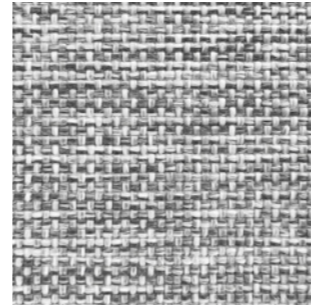
D 130



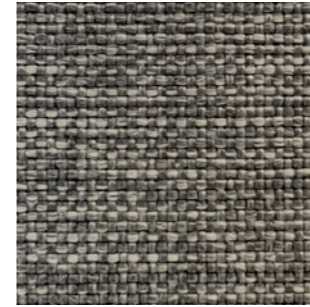
D 132



D 131



D 133



N

only for outdoor accessory
cushions / solo per cuscini
accessori outdoor

Collection / Collezione

• **DEDAR**

STRANGE LOVES
from N40 to N45

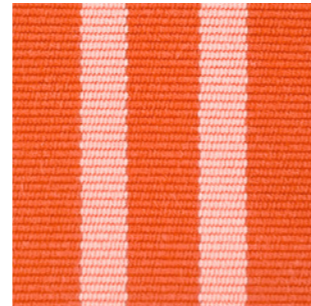
N 40



N 41



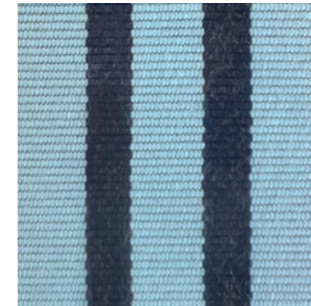
N 42



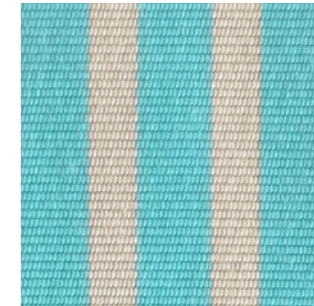
N 45



N 44



N 43







Fabrics

Tessuti

Category D

PEDRALI

D  **only for outdoor collections cushions**
solo per cuscini delle collezioni outdoor

	D140÷D144	D22÷D26	D110÷D115	D100÷D105
COMPOSITION COMPOSIZIONE	100% Polypropylene	100% Polypropylene	88% Polypropylene 12% Polyester	100% Polypropylene
WEIGHT GRAMMATURA	520 g/m ² (15.34 oz/yd ²)	614 g/m ² (18.11 oz/yd ²)	470 g/m ² (13.86 oz/yd ²)	430 g/m ² (12.68 oz/yd ²)
ABRASION ABRASIONE	62.000 cycles, Martindale (EN ISO 13936-2)	> 30.000 cycles, Martindale (EN ISO 12947-2)	30.000 cycles, Martindale (EN ISO 12947-2)	50.000 cycles, Martindale (EN ISO 12947-2)
RUBBING FASTNESS SOLIDITÀ ALLO SFREGAMENTO	/	Dry and Wet 4-5, scale 1-5 (ISO 105-X12)	Dry 4-5 and Wet 4, scale 1-5 (ISO 105-X12)	Dry 4-5 and Wet 4-5, scale 1-5 (ISO 105-X12)
PILLING	4, scale 1-5 (EN ISO 12945-2 to 5.000 rubs)	5, scale 1-5 (EN ISO 12945-2 to 5.000 cycles)	4, scale 1-5 (EN ISO 12945-2 to 5.000 rubs)	4-5, scale 1-5 (EN ISO 12945-2)
LIGHT FASTNESS SOLIDITÀ ALLA LUCE	7, scale 1-8 (ISO 105-B02)	7, scale 1-8 (ISO 105-B02)	7-8, scale 1-8 (ISO 105-B02)	7, scale 1-8 (SO 105-B02)
WATER FASTNESS SOLIDITÀ ALL'ACQUA	7, scale 1-8 (ISO 105-B04)	5, scale 1-5 (ISO 105-E01)	7, scale 1-8 (ISO 105-B04)	>7, scale 1-8 (ISO 105-B04)
FLAME RESISTANCE RESISTENZA AL FUOCO	BS 5852 Part 0,1 US CA TB 117-2013 - Compliant to the criteria certifying the absence of flame retardant chemicals (AB 2998)	BS 5852 Part 1 US CA TB 117-2013	BS 5852 Part 1 US CA TB 117-2013 - Compliant to the criteria certifying the absence of flame retardant chemicals (AB 2998)	US CA TB 117-2013 - Compliant to the criteria certifying the absence of flame retardant chemicals (AB 2998)
CLEANING LAVAGGIO				



D

only for outdoor collections
cushions / solo per cuscini
delle collezioni outdoor

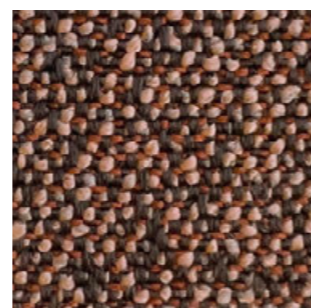
D 140



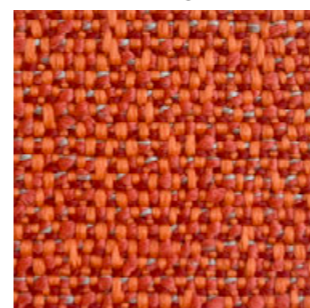
D 141



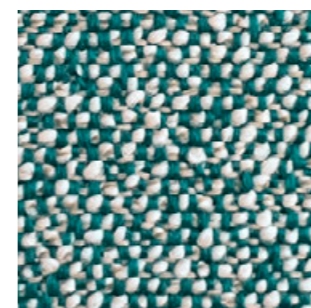
D 142



D 143



D 144



Collection / Collezione

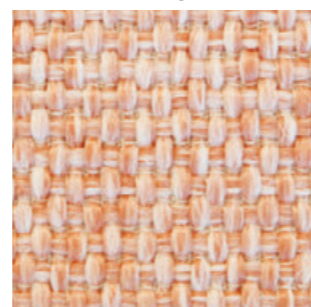
• **PEDRALI**

BREZZA
from D22 to D26

D 22



D 23



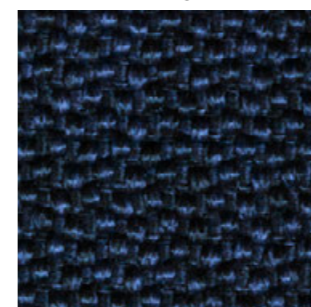
D 24



D 25



D 26



Collection / Collezione

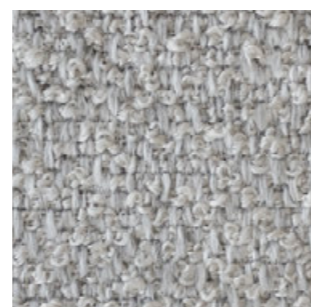
• **PEDRALI**

SAND
from D110 to D115

D 110



D 111



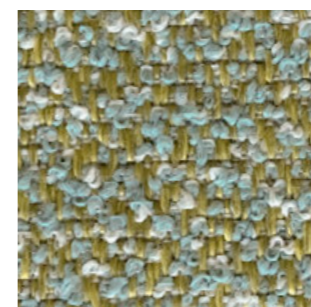
D 112



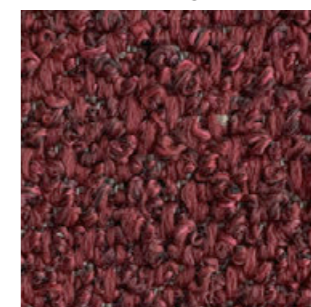
D 113



D 114



D 115



Collection / Collezione

• **PEDRALI**

ZEFIRO
from D100 to D105

D 100



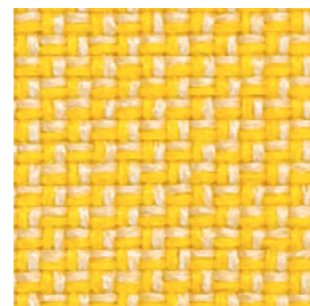
D 101



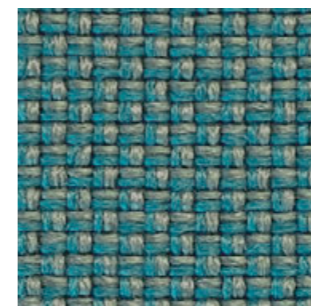
D 105



D 102



D 103



D 104








Simil Leather

Finta Pelle

Category C

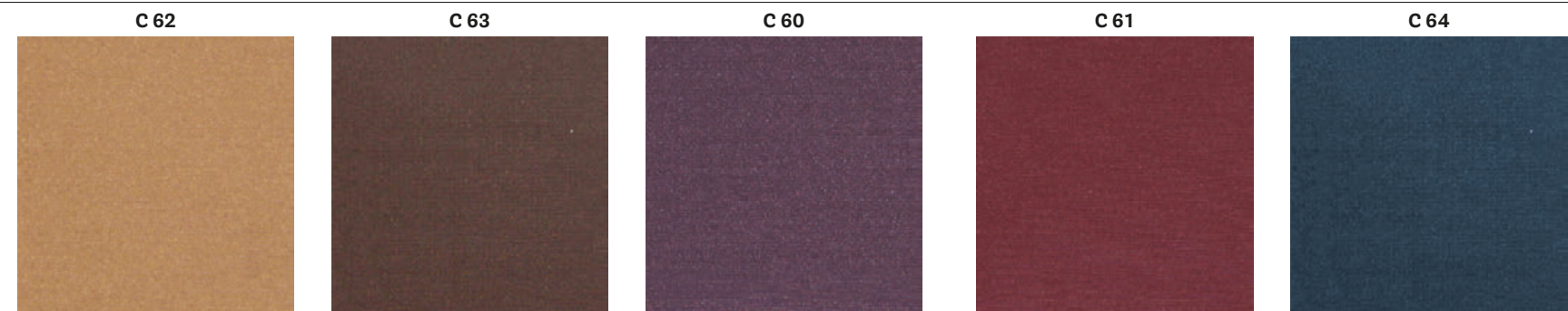
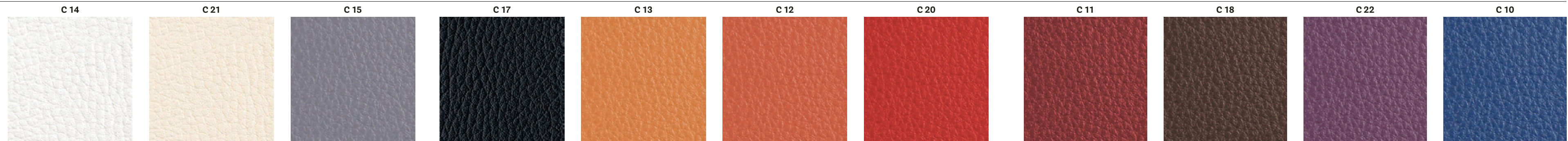
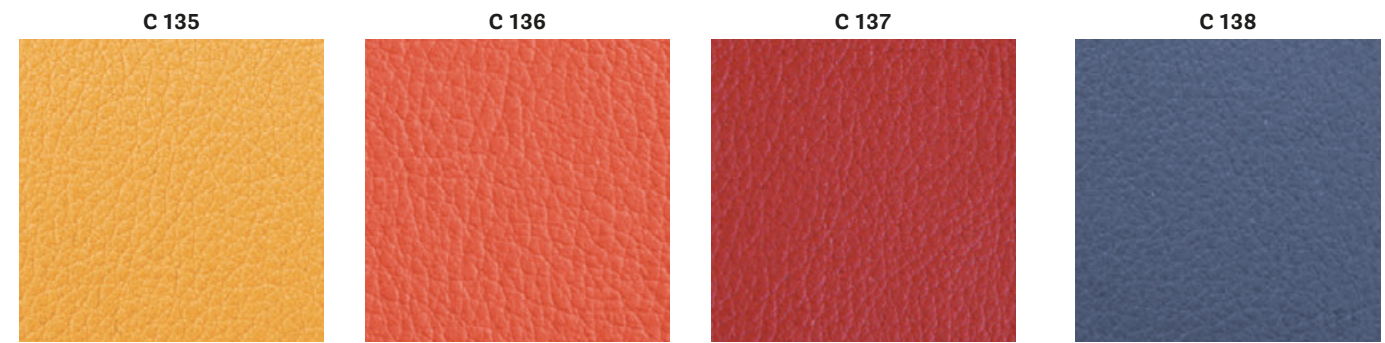
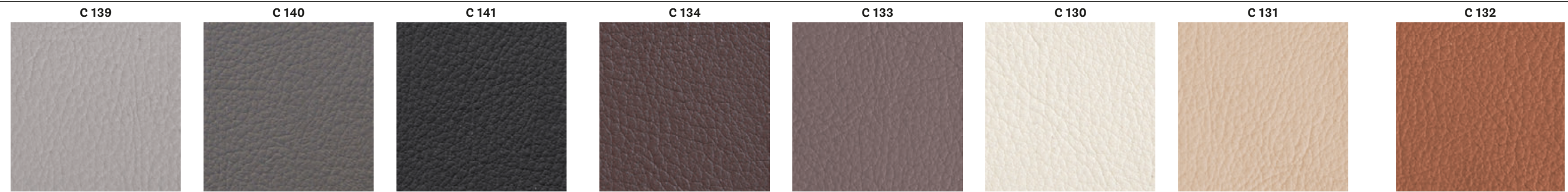
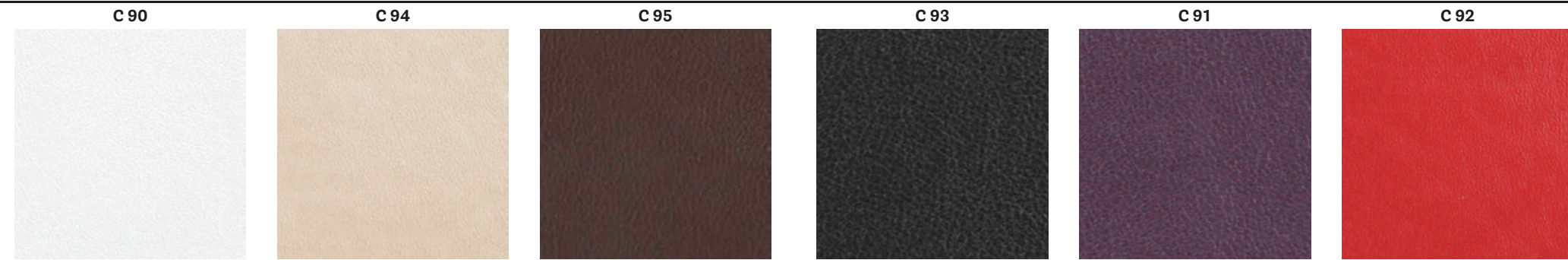
PEDRALI®

SIMIL LEATHER / FINTA PELLE

	C 	C90+C95 C60+C64	C130+C141	C10+C22
COMPOSITION COMPOSIZIONE		72% PVC 25% Cotton 3% Polyurethane	76% PVC 22% Polyester 2% Polyurethane	85% PVC 15% Cotton
WEIGHT GRAMMATURA		600 g/m ² (17.70 oz/yd ²)	540 g/m ² (15.93 oz/yd ²)	830 g/m ² (24.48 oz/yd ²)
ABRASION ABRASIONE		100.000 cycles Martindale (EN ISO 5470-2)	60.000 cycles Martindale (EN ISO 5470-2)	150.000 cycles Martindale (EN ISO 5470-2)
RUBBING FASTNESS SOLIDITÀ ALLO SFREGAMENTO		Dry and Wet 5, scale 1-5 (ISO 105-X12)	Dry and Wet 5, scale 1-5 (ISO 105-X12)	/
LIGHT FASTNESS SOLIDITÀ ALLA LUCE		6-7, scale 1-8 (ISO 105-B02)	6-7, scale 1-8 (ISO 105-B02)	≥6, scale 1-8 (ISO 105-B02)
FLAME RESISTANCE RESISTENZA AL FUOCO		BS 5852 Part 1 EN 1021 – 1/2 IMO res. A 652 (16) UNI 9175 Classe 1 IM US CA TB 117-2013	BS 5852 Part 1 EN 1021 – 1/2 UNI 9175 Classe 1 IM US CA TB 117-2013	DIN 4102-1 B2 BS 5852 Crib 5 EN 1021 – 1/2 EN 13501-1, C-s3, d0 FAR 25.853 App F Part 1 IMO res. A 652 NF D60-013 AM18 NF P92.507 M1 NY/NJ - Port Authority UFAC Fabric Class 1 German fire standard B1 (except C12 and C22) US CA TB 133 US CA TB 117-2013
APPROVED OMOLOGATO		/	/	
CLEANING LAVAGGIO				



C




Simil Leather

Finta Pelle

Category A | H

PEDRALI®

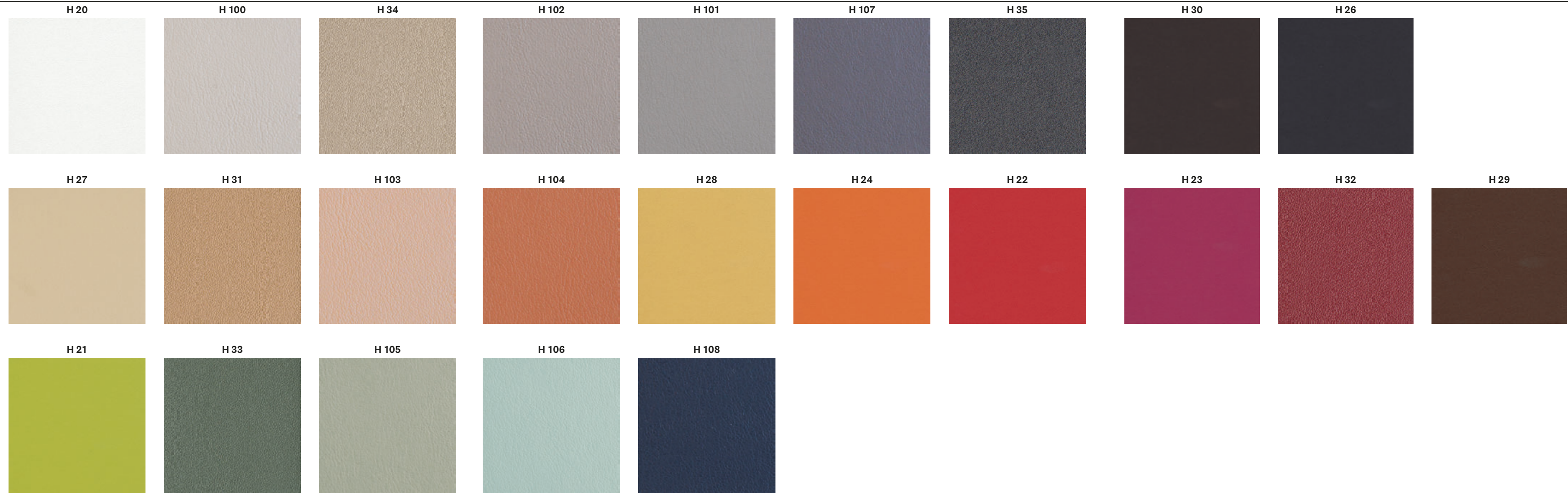
SIMIL LEATHER / FINTA PELLE

	A	H 
	A70+A96	H20+H35 H100+H108
COMPOSITION COMPOSIZIONE	85% PVC 15% Polyester	63% Polyurethane 29% Cotton 8% Polyester
WEIGHT GRAMMATURA	550 g/m ² (16.22 oz/yd ²)	480 g/m ² (14.16 oz/yd ²)
ABRASION ABRASIONE	50.000 cycles Martindale (EN ISO 5470-2)	150.000 cycles Martindale (EN ISO 12947-2)
RUBBING FASTNESS SOLIDITÀ ALLO SFREGAMENTO	Dry and Wet 5, scale 1-5 (ISO 105-X12)	/
LIGHT FASTNESS SOLIDITÀ ALLA LUCE	6, scale 1-8 (ISO 105-B02)	5-6, scale 1-8 (ISO 105-B02)
FLAME RESISTANCE RESISTENZA AL FUOCO	BS 5852 Part 1 US CA TB 117-2013 - Compliant to the criteria certifying the absence of flame retardant chemicals (AB 2998)	BS 5852 Part 1 BS 5852 Crib 5 EN 1021 - 1/2 IMO FTP Code 2010 ÖNORM B 3825 UNI 9175 Classe 1 IM US CA TB 117-2013 - Compliant to the criteria certifying the absence of flame retardant chemicals (AB 2998)
CLEANING LAVAGGIO		

A



H



Leather



Pelle

Category P

PEDRALI

LEATHER / PELLE

P

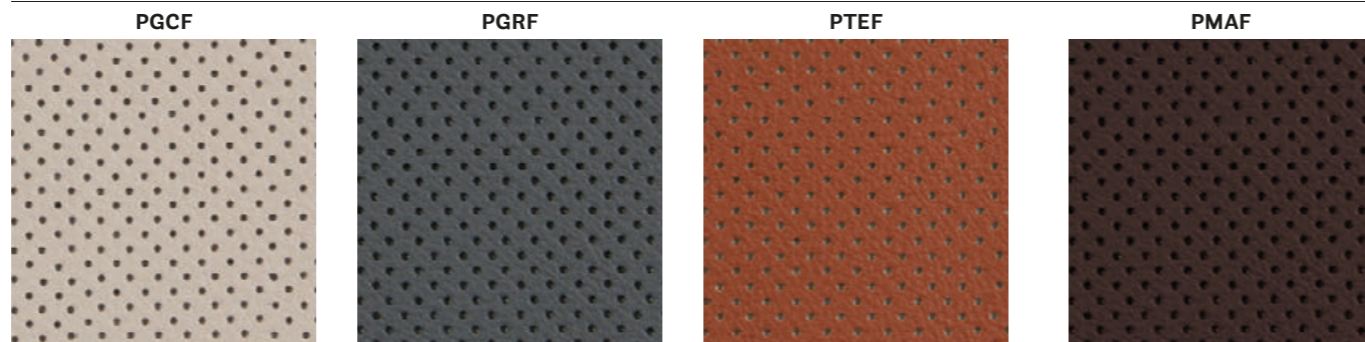
	PBI, PLA, PGC, PSA, PGA, PBE, PGN, PTA, PTE, PRO, PGR, PMA, PNE	PGCF, PGRF, PTEF, PMAF	PBS, PCO, PMS, PVE
COMPOSITION COMPOSIZIONE	Mid grain leather Pelle mezzo fiore	Perforated mid grain leather Pelle mezzo fiore traforata	Vintage mid grain leather Pelle mezzo fiore anticata
WEIGHT GRAMMATURA	0.9-1.1 mm (0.035-0.043 in)	0.9-1.1 mm (0.035-0.043 in)	0.8-1.0 mm (0.031-0.039 in)
RUBBING FASTNESS SOLIDITÀ ALLO SFREGAMENTO	Dry (500 Cycles) and Wet (250 Cycles) ≥ 4 (EN ISO 11640:1998)	Dry (500 Cycles) and Wet (250 Cycles) ≥ 4 (EN ISO 11640:1998)	Dry (50 Cycles) and Wet (20 Cycles) ≥ 3 (EN ISO 11640:1998)
LIGHT FASTNESS SOLIDITÀ ALLA LUCE	≥ 5 (ISO 105 B02) (MET.5)	≥ 5 (ISO 105 B02) (MET.5)	≥ 3 (ISO 105-B02) (MET.5)
FLAME RESISTANCE RESISTENZA AL FUOCO	BS 5852:1979 BS EN 1021-1-2:2006 US CA TB 117-2013 - Compliant to the criteria certifying the absence of flame retardant chemicals (AB 2998)	BS 5852:1979 BS EN 1021-1-2:2006 US CA TB 117-2013 - Compliant to the criteria certifying the absence of flame retardant chemicals (AB 2998)	BS 5852:1979 BS EN 1021-1-2:2006
APPROVED OMOLOGATO			/
CLEANING LAVAGGIO	Clean with a damp cloth using water. Do not use detergents, solvents, bleached, abrasives. Pulire con un panno umido d'acqua. Non usare detersivi, solventi, candeggianti, abrasivi.	Clean with a damp cloth using water. Do not use detergents, solvents, bleached, abrasives. Pulire con un panno umido d'acqua. Non usare detersivi, solventi, candeggianti, abrasivi.	Clean with a damp cloth and warm water. Do not use detergents, solvents, bleached, abrasives. Pulire con acqua calda e un panno umido. Non usare detersivi, solventi, candeggianti, abrasivi.

P

Collection / Collezione



LINEA



only for collections / solo per collezioni



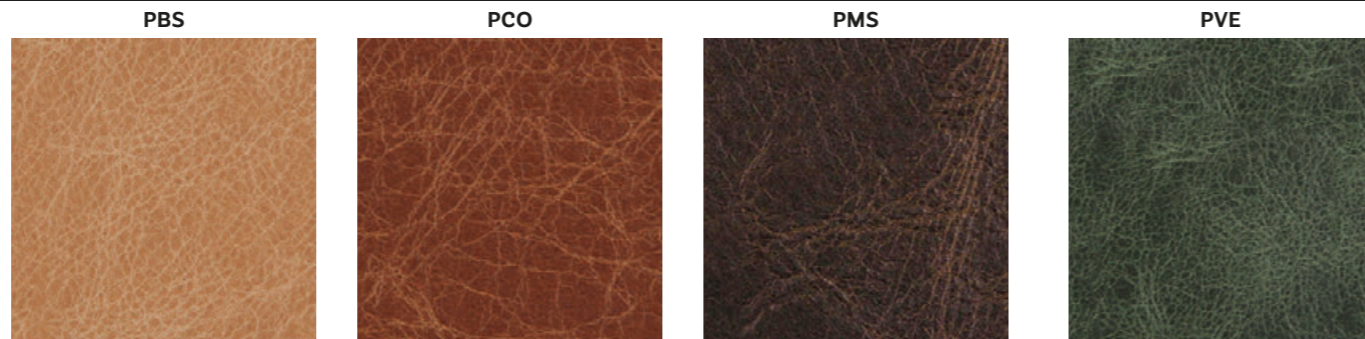
Vic and Vic Metal

Inner part of the back,
upper part of the seat
Lato interno dello schienale
e parte superiore del sedile

Collection / Collezione



TUSCANIA



only for collections / solo per collezioni



Malmö



Inga

Hard leather

Cuoio

Category F

GENUINE AND REGENERATED
NATURALE E RIGENERATO

PEDRALI

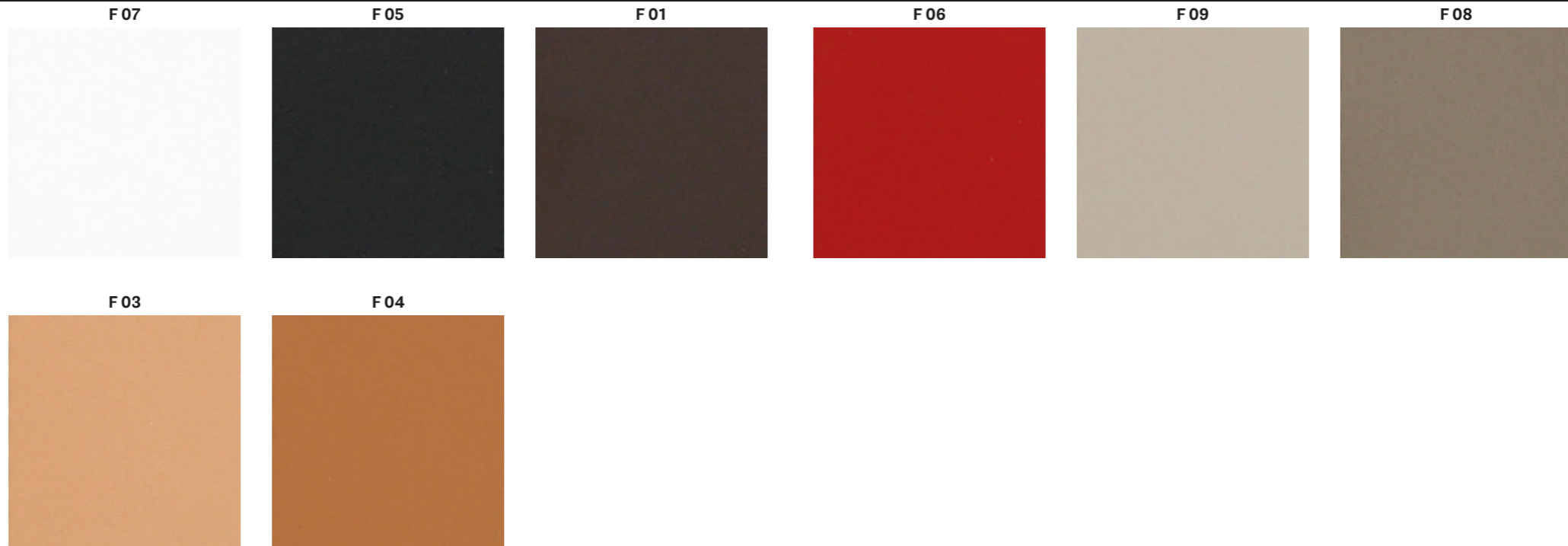
HARD LEATHER / CUOIO

F

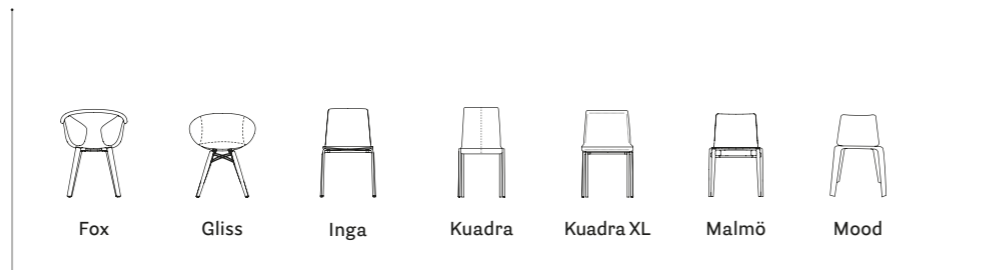
	F01÷F09	F11÷F19
COMPOSITION COMPOSIZIONE	Genuine hard leather, tanned with vegetable substances Cuoio naturale, conciato con sostanze vegetali	Regenerated hard leather. Tanned leather cuttings and shavings linked with natural rubber latex Cuoio rigenerato. Ritagli e rasatura di cuoio conciato legati con lattice di gomma naturale
RUBBING FASTNESS SOLIDITÀ ALLO SFREGAMENTO	Satisfactory up to maximum 700 abrasions in humid environment and 1000 abrasions in dry environment Soddisfacente sino a max 700 abrasioni all'umido e 1000 abrasioni al secco	Dry and Wet >1000 (UNI EN ISO 11640)
LIGHT FASTNESS SOLIDITÀ ALLA LUCE	/	4-5 Xenotest Method
FLAME RESISTANCE RESISTENZA AL FUOCO	/	BS EN 1021 1&2 BS 5852 Part 1 US CA TB 117 E Part 1
CLEANING LAVAGGIO	Clean with a damp cloth using water Pulire con un panno umido d'acqua	Clean with a damp cloth using water Pulire con un panno umido d'acqua



GENUINE HARD LEATHER
CUOIO NATURALE



only for collections / solo per collezioni



REGENERATED HARD LEATHER
CUOIO RIGENERATO



only for collections / solo per collezioni



Velvet

Velluto

Category E | G | H | N

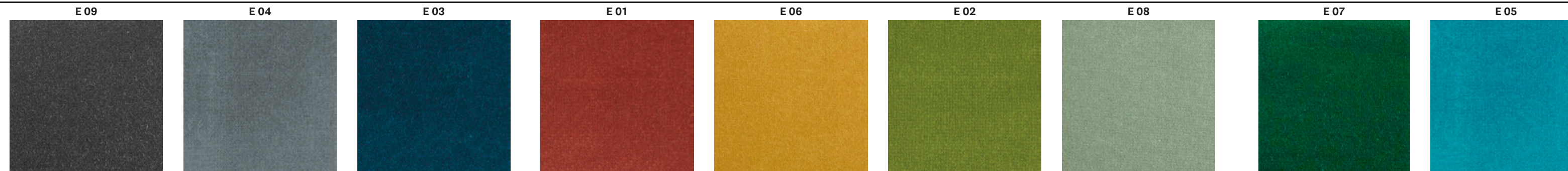
PEDRALI

VELVET / VELLUTO

	E	G		H 	N 
	E01+E09	G230+G239	G180+G185	H40+H53	N20+N27
COMPOSITION COMPOSIZIONE	100% Cotton	100% Cotton	100% TREVIRA CS®	100% TREVIRA CS®	100% Polyester FR
WEIGHT GRAMMATURA	450 g/m ² (13.27 oz/yd ²)	540 g/m ² (15.93 oz/yd ²)	457 g/m ² (13.48 oz/yd ²)	470 g/m ² (13.86 oz/yd ²)	685 g/m ² (20.20 oz/yd ²)
ABRASION ABRASIONE	50.000 cycles Martindale (EN ISO 12947-2)	70.000 cycles Martindale (EN ISO 12947-2)	50.000 cycles Martindale (EN ISO 12947)	190.000 cycles Martindale (EN ISO 12947-2)	100.000 cycles Martindale (EN ISO 12947)
RUBBING FASTNESS SOLIDITÀ ALLO SFREGAMENTO	Dry 4-5 and Wet 3-5, scale 1-5 (ISO 105-X12)	Dry and Wet 4-5, scale 1-5 (ISO 105-X12)	Dry and Wet 4-5, scale 1-5 (ISO 105-X12)	Dry and Wet 4-5, scale 1-5 (ISO 105-X12)	Dry 5 and Wet 4-5, scale 1-5 (ISO 105-X12)
PILLING	/	5, scale 1-5 (EN ISO 12945-2)	4-5, scale 1-5 (EN ISO 12945)	5, scale 1-5 (EN ISO 12945-2)	4, scale 1-5 (EN ISO 12945)
LIGHT FASTNESS SOLIDITÀ ALLA LUCE	4-6, scale 1-8 (ISO 105-B02)	4-5, scale 1-8 (ISO 105-B02)	6, scale 1-8 (ISO 105-B02)	5, scale 1-8 (ISO 105-B02)	5-6, scale 1-8 (ISO 105-B02)
SOUND ABSORPTION ASSORBIMENTO ACUSTICO	/	folded: $\alpha_w = 0.75$ (EN ISO 354)	folded: $\alpha_w = 0.85$ Class B (EN ISO 354)	folded: $\alpha_w = 0.70$ (EN ISO 354)	folded: $\alpha_w = 0.80$ Class B (EN ISO 354)
FLAME RESISTANCE RESISTENZA AL FUOCO	BS 5852 Part 1	BS 5852 Part 1 US CA TB 117-2013 - Compliant to the criteria certifying the absence of flame retardant chemicals (AB 2998)	ASTM E84 Class A Unadhered AS/NZS 3837 Class 1 BS 5852 Part 1 BS 5852 Crib 5 BS 5867 Part 2 type B DIN 4102 B1 EN 1021 - 1/2 EN 13501-1, B-s1, d0 GB 8624 B1 IMO FTP Code 2010: Part 8 IMO FTP Code 2010: Part 5 NF D60-013 NF P92-507 M1 ÖNORM B1/Q1 CAN ULC S102 SN 198 898 5.2 UNI 9177 Classe 1 UNI 9175 Classe 1 IM US CA TB 117-2013	BS 5852 Part 0,1 DIN 4102 B1 EN 1021 - 1/2 IMO MSC 307(88) Annex 1 Part 7-8 NF P92 503-507 M1 NFPA 260 UNI 9177 Classe 1 UNI 9175 Classe 1 IM US CA TB 117-2013	AS/NZS 1530.3 ASTM E84 Class A Unadhered AS/NZS 3837 Class 1 BS 5852 Crib 5 BS 5867 Part 2 type B DIN 4102 B1 EN 1021 - 1/2 EN 13501-1, B-s1, d0 EN 13773 Class 1 GB 8624 B1 IMO FTP Code 2010: Part 8 NFPA 260 NFPA 701 NF P92 507 M1 CAN ULC S102 S109 SN 198 898 5.2 UNI 9175 Classe 1 IM US CA TB 117-2013
APPROVED OMOLOGATO	/	/	 PRODUCT CERTIFIED FOR LOW CHEMICAL EMISSIONS UL 2818 170166-420	/	 PRODUCT CERTIFIED FOR LOW CHEMICAL EMISSIONS UL 2818 170166-420
CLEANING LAVAGGIO					

E

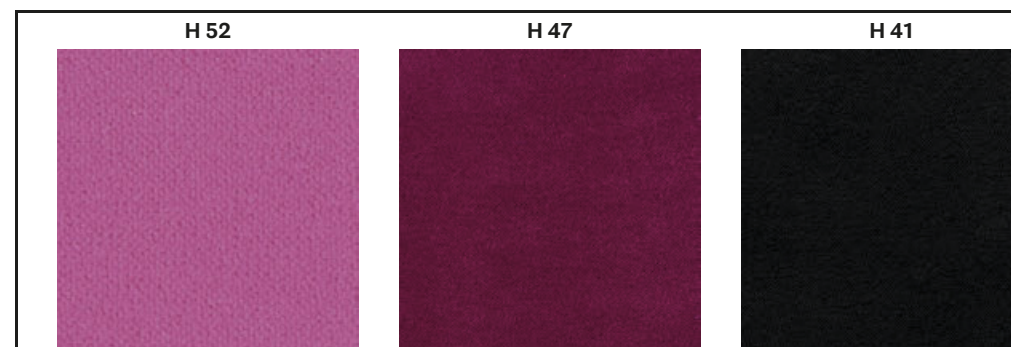
Collection / Collezione
• **DEDAR**
ADAMO & EVA
from E01 to E09



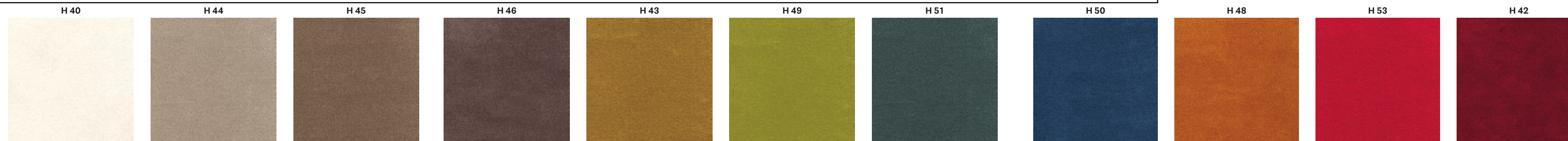
G



Collection / Collezione
• **kvadrat**
STILL
from G180 to G185
DESIGNER Georgina Wright



H



N

Collection / Collezione
• **kvadrat-SAHCO**
BALBOA
from N20 to N27

